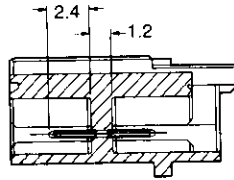
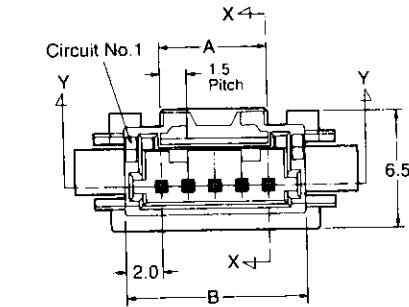
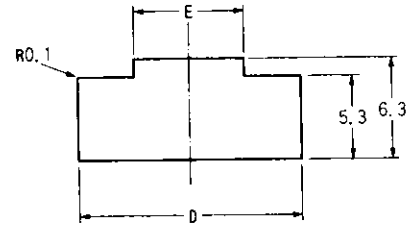


Wire to Board Connectors Mini CT (Common Termination) Connector System Post Header Assemblies (Panel-mount)

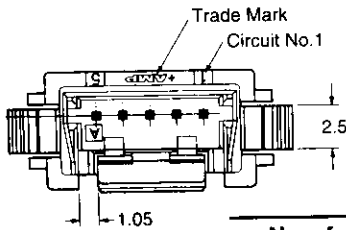
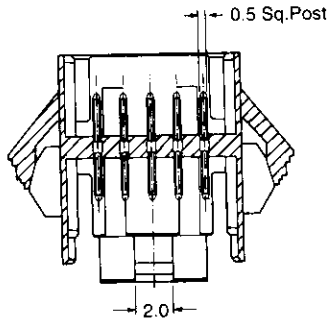
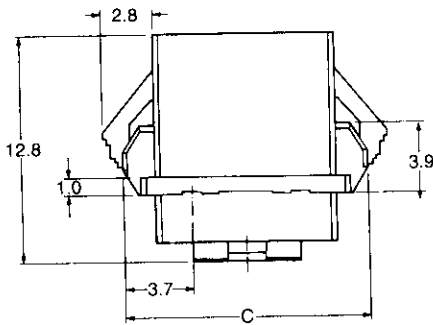
For One-Row Intermediary Application



Section X-X

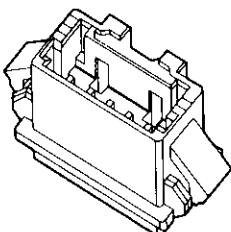


PC Cutout Dimension
(Recommended Panel thickness = 0.8~1.6mm)



Material and Finish :

Housing — UL94V-0 rated,
66Nylon, white and blue
Post — Pre-tinned, brass wire



No. of Pos.	Dimensions					Part No. of Post Header Assemblies	
	A	B	C	D	E	White	Blue
2	1.5	5.5	8.9	9.5	2.6	292215-2	5-292215-2
3	3.0	7.0	10.4	11.0	4.6	292215-3	5-292215-3
4	4.5	8.5	11.9	12.5	4.9	292215-4	5-292215-4
5	6.0	10.0	13.4	14.0	6.4	292215-5	5-292215-5
6	7.5	11.5	14.9	15.5	6.4	292215-6	5-292215-6
7	9.0	13.0	16.4	17.0	6.4	292215-7	5-292215-7
8	10.5	14.5	17.9	18.5	6.4	292215-8	5-292215-8
9	12.0	16.0	19.4	20.0	13.1	292215-9	5-292215-9
10	13.5	17.5	20.9	21.5	13.1	1-292215-0	6-292215-0
11	15.0	19.0	22.4	23.0	13.1	1-292215-1	6-292215-1
12	16.5	20.5	23.9	24.5	13.1	1-292215-2	6-292215-2
13	18.0	22.0	25.4	26.0	13.1	1-292215-3	6-292215-3
14	19.5	23.5	26.9	27.5	19.8	1-292215-4	6-292215-4
15	21.0	25.0	28.4	29.0	19.8	1-292215-5	6-292215-5
16	22.5	26.5	29.9	30.5	19.8	1-292215-6	6-292215-6
17	24.0	28.0	31.4	32.0	19.8	1-292215-7	6-292215-7
18	25.5	29.5	32.9	33.5	19.8	1-292215-8	6-292215-8
19	27.0	31.0	34.4	35.0	19.8	1-292215-9	6-292215-9
20	28.5	32.5	35.9	36.5	19.8	2-292215-0	7-292215-0