

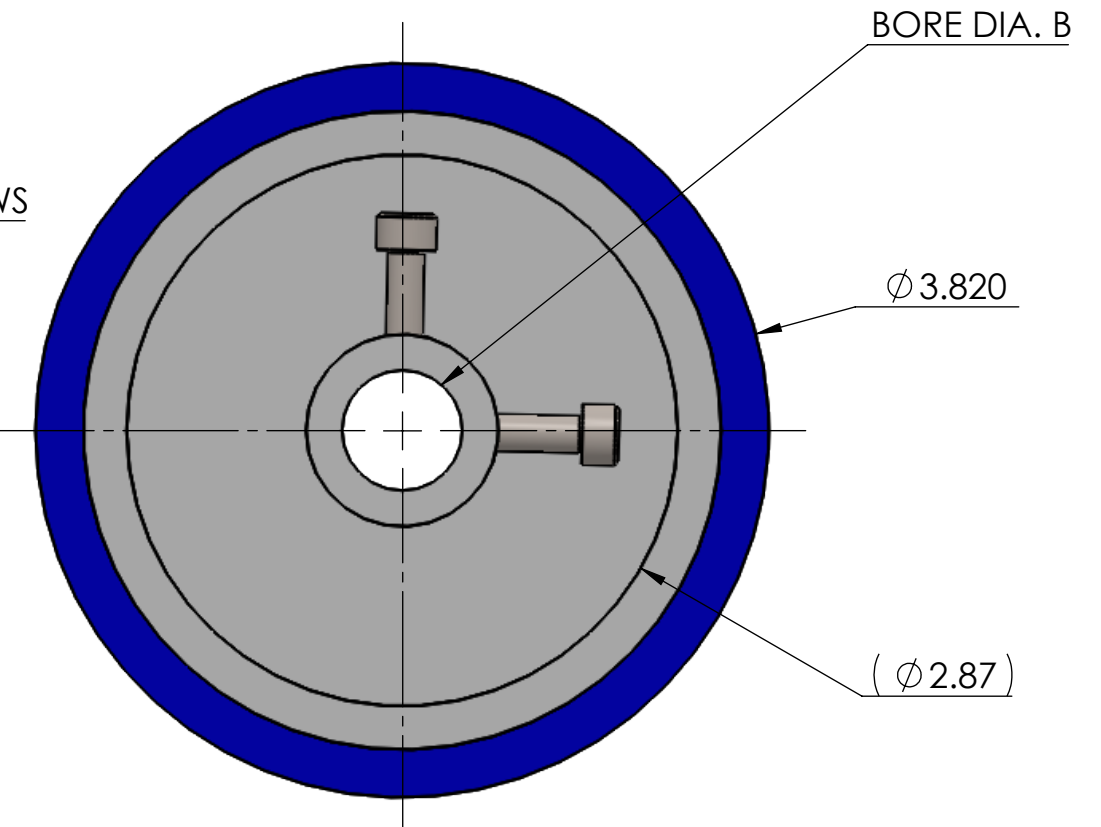
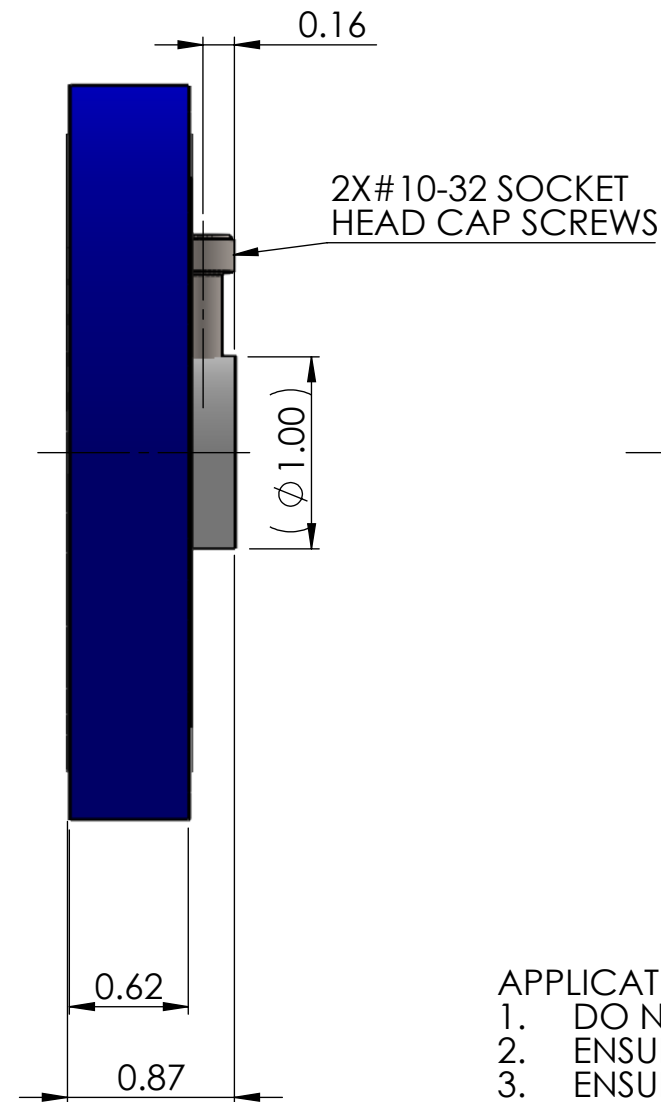
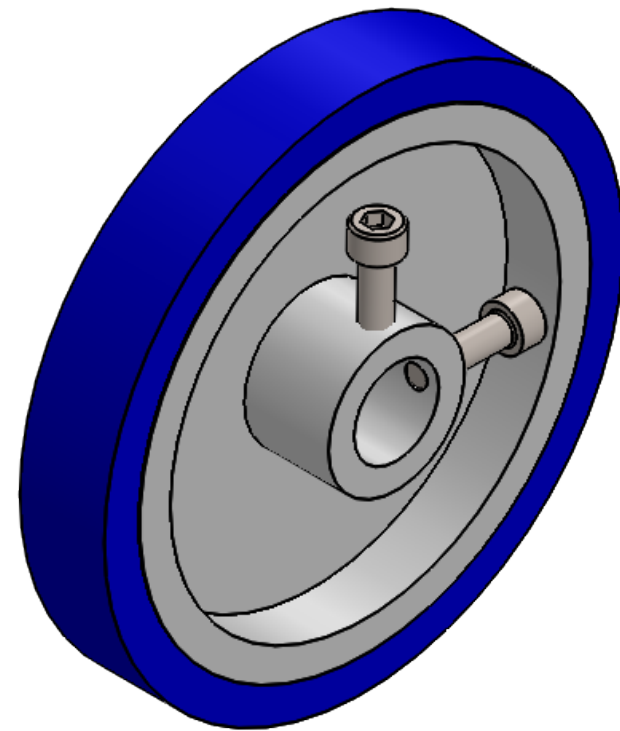
4

3

2

1

ZONE	REV.	REVISION DESCRIPTION	ECN NO.	DATE



PART NO.	BORE B
38352-001	.375/.376
38352-002	.500/.501
38352-003	.625/.626

APPLICATION NOTES;

- DO NOT HAMMER MEASURING WHEEL ON TO SHAFT
- ENSURE HUB IS FACING OUTWARD WITH RESPECT TO ENCODER
- ENSURE CONTACT LOAD ON WHEEL DOES NOT EXCEED SIDE LOAD RATING OF ENCODER

NOTES (UNLESS OTHERWISE INDICATED)

- CIRCUMFERENCE OF WHEEL IS $12 \pm .01$ IN.
- MATERIAL: ALUMINUM HUB WITH SMOOTH URETHANE OVERMOLD
- OPERATING TEMPERATURE: 0° TO $+85^{\circ}$ C

UNCONTROLLED COPY

FIRST ISSUE DATE: 10/22/18
 DRAWN: DRC
 APPROVED: MFB
 DATE: 10/22/18

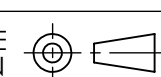
ECN:

DATE:

MATERIAL:
NOTED

SENSATA TECHNOLOGIES PROPRIETARY AND CONFIDENTIAL. NEITHER THIS PRINT NOR THE INFORMATION CONTAINED HEREON IS TO BE USED AGAINST THE INTERESTS OF SENSATA TECHNOLOGIES OR AGAINST THE INTERESTS OF ANY OF ITS AFFILIATED COMPANIES OR WHOLLY OWNED SUBSIDIARIES.

INTERPRET DIMENSIONING AND TOLERANCING PER ASME Y14.5-2009. UNLESS OTHERWISE SPECIFIED DIMENSIONS ARE IN INCHES [MILLIMETERS] AND ARE INTENDED AS NOMINAL SEE PRODUCT SPECIFICATIONS FOR MORE DETAILS.

DO NOT
SCALE
DRAWINGTHIRD ANGLE
PROJECTION

BEI SENSORS
 1461 LAWRENCE DRIVE
 THOUSAND OAKS, CA 93120

TITLE
 MEASURING WHEEL
 12 INCH CIRCUMFERENCE

SIZE DWG NO. REV.
 B 09902-001 A

SCALE 1:1 SOLIDWORKS SHEET 1 OF 1

4

3

2

1

DEVICE:

PROJECT: