

HONEYWELL

See full Datasheet below...

onlinecomponents.com
THE ONLINE DISTRIBUTOR OF ELECTRONIC COMPONENTS

BUY NOW

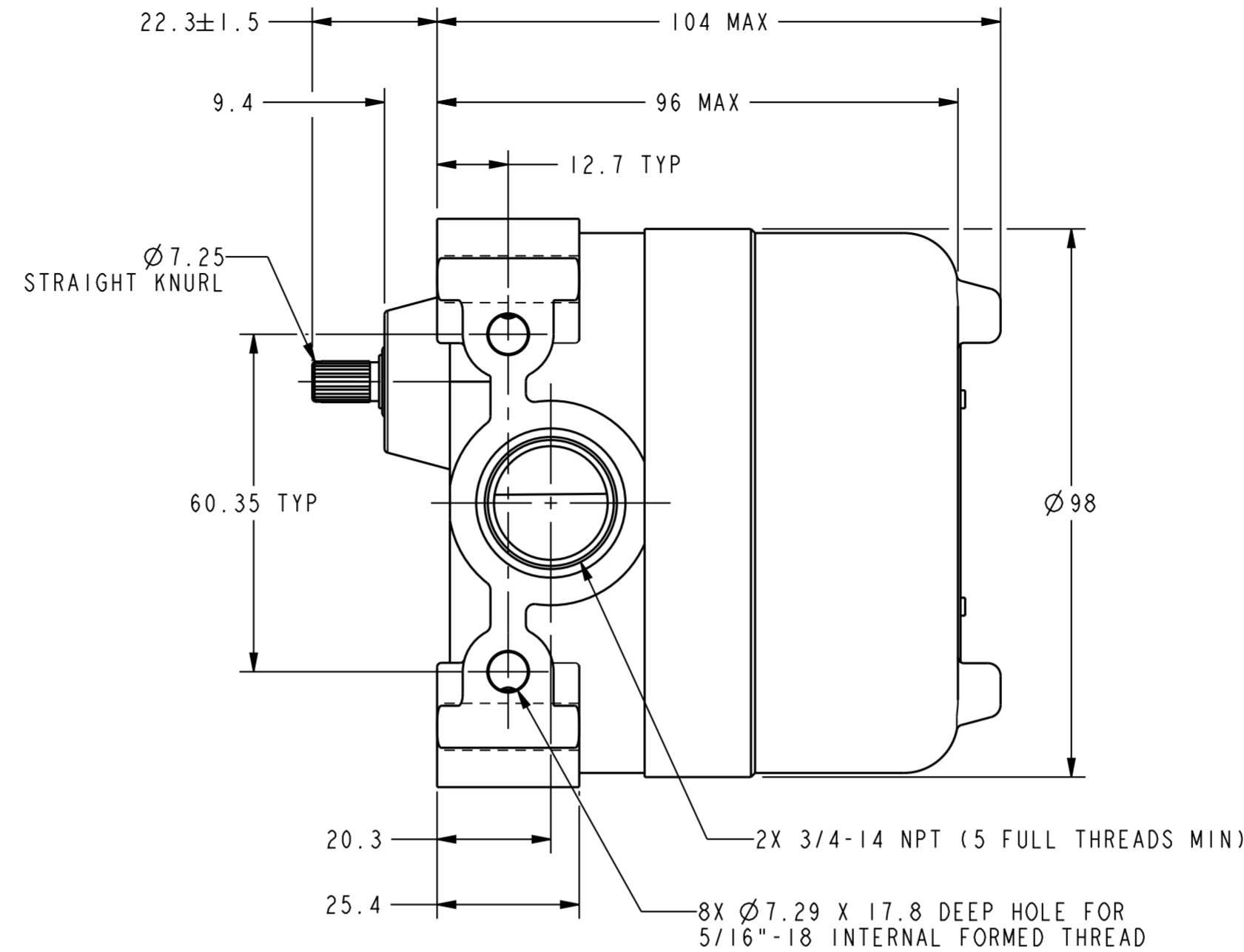
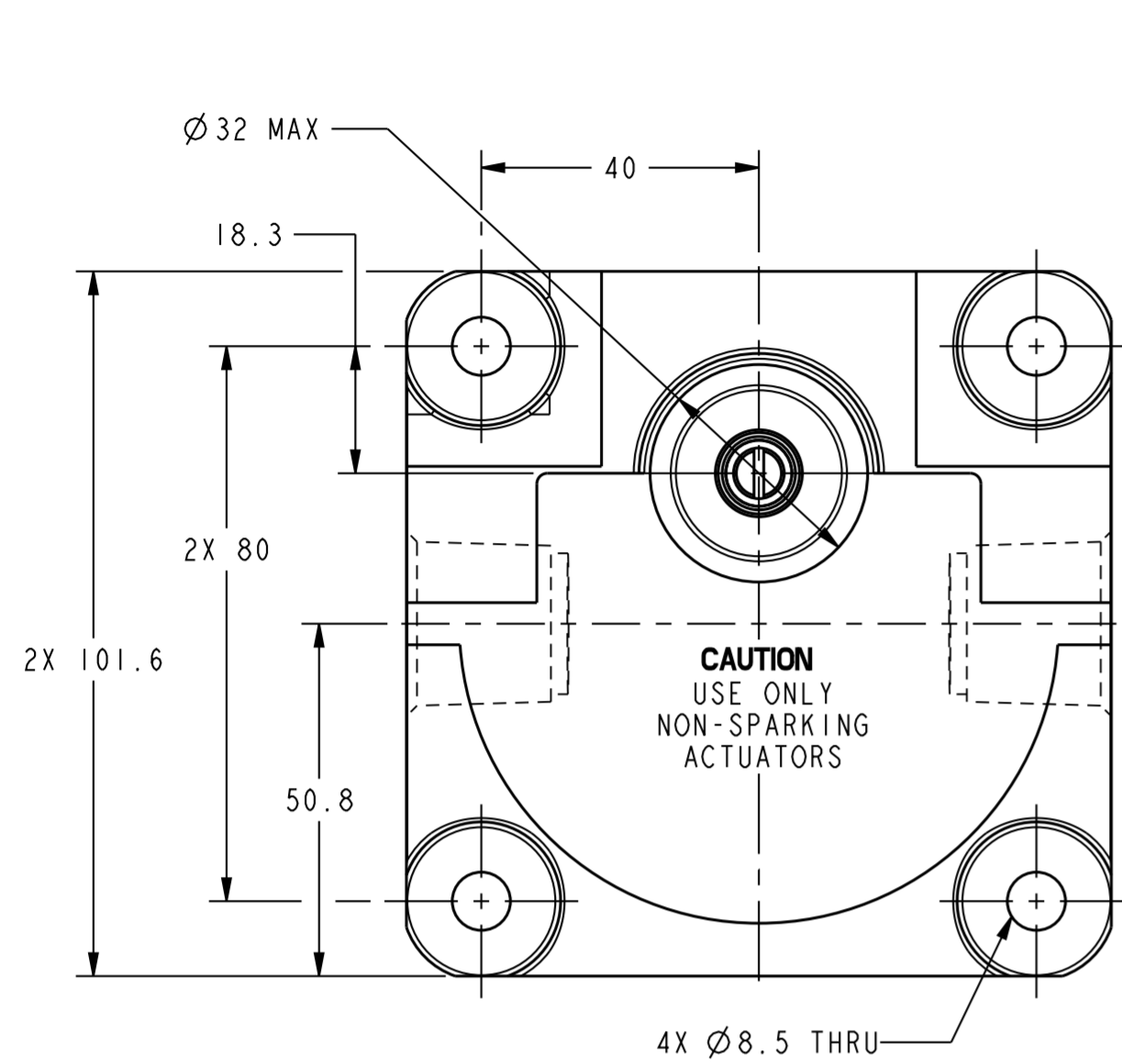
 **MASTER**TM
E L E C T R O N I C S

BUY NOW

masterelectronics.com & onlinecomponents.com
are **authorized** e-commerce distributors
of electronic components.

PART NUMBER
SEE TABLE

REVISION HISTORY					
REV	DOCUMENT	DESCRIPTION	CHGD BY	DATE	APPROVED
8	0127986	REDRAWN WITH CHANGE	RKA	2016-03-03	M. MANTUA



CONVERSION CHART	
5.55	.218
7.25	.285
7.29	.287
8.5	.33
9.4	.37
12.7	.50
17.8	.70
18.3	.72
20.3	.80
22.3 ± 1.5	.880 ± .059
25.4	1.00
32.0	1.26
40.0	1.57
50.8	2.00
60.35	2.38
80.0	3.15
96.0	3.78
98.0	3.86
101.6	4.00
104.0	4.09
1.25 Nm	.922 PF
0.113 Nm	.083 PF
1.13 Kg	2.49 LB

NOTES:

- EXPLOSION PROOF-UNDERWRITERS LAB INC LISTING FOR HAZARDOUS LOCATIONS CLASS I, GROUPS B, C AND D; CLASS II, GROUPS E, F AND G
- ALUMINUM ENCLOSURE FINISHED WITH BLUE AND BLACK EPOXY PAINT
- 6-32 UNC X (5.55) BINDING HEAD TERMINAL SCREW & CUP WASHER (3 PER BASIC)
- CAMS MAY BE REPOSITIONED IN 7° 20' INCREMENTS
- FOR USE IN TEMPERATURES UP TO 85°C
- SEE INSTALLATION DRAWING 7CX CHARTS 1 & 2 FOR LEVER ACTUATORS

CAT LIST	DESCRIPTION	ELECTRICAL DATA
16CX1-	1 BASIC; OPERATES CW & CCW	UL LISTED-FILE E14274 CODE L22 1A-125 VAC
16CX2-	2 BASICS; EACH OPERATES CW & CCW	
16CX5-	2 BASICS; ONE OPERATES CW ONE OPERATES CCW	

CHARACTERISTICS	ELECTRICAL DATA
OPERATING FORCE----- 1.25 Nm MAX	CONTACT ARRANGEMENT S P D T
RELEASE FORCE-----0.113 Nm MIN	
PRE TRAVEL----- 30° MAX	
DIFFERENTIAL TRAVEL----- 20° MAX	
OVERTRAVEL----- 75° MIN	

UNLESS OTHERWISE SPECIFIED	THIRD ANGLE PROJECTION
DIMENSIONS ARE IN mm	
DECIMAL TOL NO PLACE --- ±1 1 PLACE --- ±0.4 2 PLACE --- ±0.15 3 PLACE ---	
ANGULAR TOL - CHAMFER -	
MATERIAL	
FINISH	
APPLICABLE DOCUMENTS: ASME Y14.100-2013 ASME Y14.5-2009	
COMPUTER GENERATED DRAWING: PRO/ENGINEER	

Honeywell				
TITLE SWITCH - ENCLOSED				
SIZE	CAGE CODE	DWG NO	TYPE	REV
A2	91929	16CX SERIES CHART 1	I	8
SCALE	1:1	REF WT: 1.13 Kg APPROX	SHEET	1 of 1
RELEASE DATE	1978-02-17	HONEYWELL CONFIDENTIAL		
DRW: WLW	1978-02-16	THIS DOCUMENT CONTAINS PROPRIETARY INFORMATION AND SUCH INFORMATION MAY NOT BE DISCLOSED TO OTHERS FOR ANY PURPOSE, NOR USED FOR MANUFACTURING PURPOSES WITHOUT WRITTEN PERMISSION FROM HONEYWELL		
RDE: -	-			
OA: -	-			
CHK: GLH	1978-02-17			