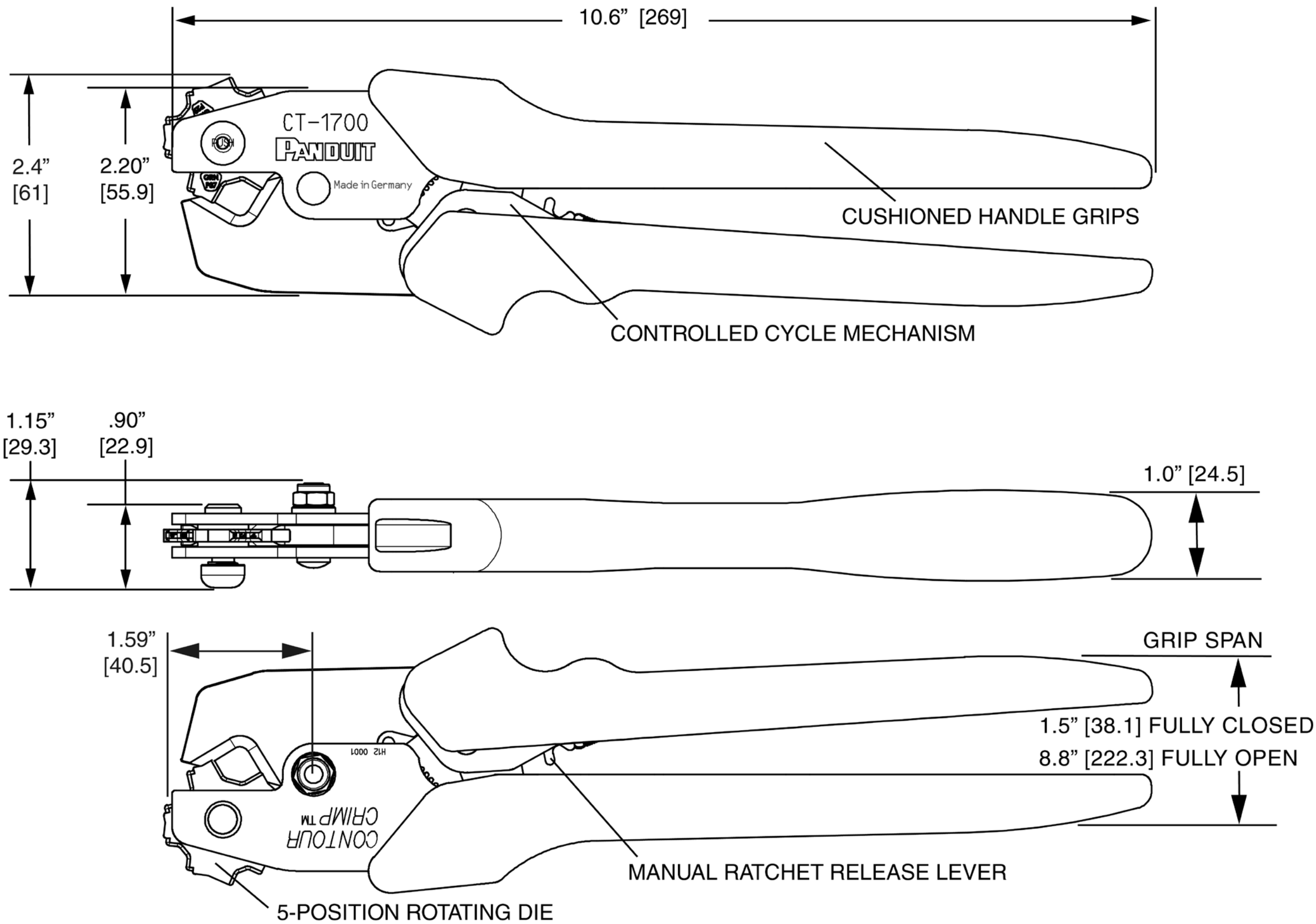


THIS COPY IS PROVIDED ON A RESTRICTED BASIS AND IS NOT TO BE USED IN ANY WAY DETRIMENTAL TO THE INTERESTS OF PANDUIT CORP.



NOTES, UNLESS OTHERWISE SPECIFIED:

PANDUIT CT-1700 TOOL:

TOOL WEIGHT: 20 oz. [0,56] kg

Crimps Panduit #8 - #1 AWG copper lugs and splices, #6 - #4 AWG aluminum lugs and splices, #8 - #2 AWG non-insulated S series tubular terminals; and #16 AWG - #3 AWG copper CTAPF taps.

Provides UL Listed and CSA Certified terminations with applicable Panduit terminals.

DIMENSIONS SHOWN IN BRACKETS [] ARE METRIC [MM], AND ARE FOR REFERENCE ONLY.

DIE COLOR/ INDEX NUMBER	ENGLISH GO / NO GO GAGE MEMBERS		METRIC GO / NO GO GAGE MEMBERS	
	"G" Dia. (GO)	"NG" Dia. (NO GO)	"G" Dia. (GO)	"NG" Dia. (NO GO)
RED P21	0.177"	0.201"	4,49 mm	5,10 mm
BLUE P24	0.219"	0.239"	5,56 mm	6,07 mm
GREY P29	0.255"	0.276"	6,47 mm	7,01 mm
BROWN P33	0.324"	0.348"	8,22 mm	8,83 mm
GREEN P37	0.347"	0.368"	8,81 mm	9,34 mm

REV	DATE	BY	CHK	APR	DESCRIPTION	ECN	DRAWN BY:	DATE:	CHK	SCALE	SHT 1 OF 1	SIZE
03	12/22/16	BWG	BJPU	JADE	REMOVED GLOBAL LOGO FROM GRIP AND MOVED MADE IN GERMANY FROM GRIP TO FRAME; ADDED GO-NO GO CHART	4857/02	BLR	5-08-15	BJPU	NONE	1	C
02	5-08-15	BLR	BJPU	ABJ	REDRAWN; UPD BRANDING	4857	BLR	5-08-15	BJPU	NONE	1	C

**CT-1700 Contour Crimp™
Crimping Tool**

CUSTOMER DRAWING

ITEM REVISION NAME:

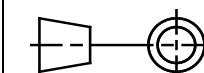
TP23621C01_03



UNLESS OTHERWISE SPECIFIED,
DIMENSIONAL TOLERANCES ARE:

(.x) ± --- (.xxx) ± ---
(.xx) ± --- ANGLES ± ---

MATERIAL:



THIRD ANGLE PROJECTION

DRAWING NUMBER:
TP23621C01