



Network Infrastructure for the Enterprise

Preferred Parts – Australia

PANDUIT™

Network Infrastructure for the Enterprise

Today's enterprise IP networks support ever-expanding converged applications for voice, data, and video, as well as functions such as intelligent lighting, security, safety systems, and more.

Panduit Enterprise Networks provide the industry's most comprehensive and holistic portfolio of products and services that enable sustainable, energy-efficient enterprises. Innovative design features provide easy installation, reduced maintenance costs, and improved network reliability and flexibility.

This catalog features the most common offering for an enterprise physical infrastructure deployment. For the complete enterprise offering, please contact your local Panduit representative or visit us at <http://www.panduit.com/en/solutions/enterprise-solutions>.

Table of Contents

Copper Cable	3	Fibre Enclosures	8
RJ45 Jack Module	3	Fibre Adapter Module and Panels	8
Patch Panels, Kits and Accessories	4	Fibre Optic Pigtails	8
Zone Cords	4	Cabinet	9
RJ45 Patch Cords	4 – 5	Racks, Shelves and Accessories	9
Patch Cord Bands	5	Cable Managers	9
Clipsal/HPM Faceplate Adapter Bezel	6	Cable Manager Capacity Chart	10
Faceplate	6	Power Distribution Unit	10
Work Station Mini Faceplate	6	Blanking Panels	10
Surface Mount Box	6	Enclosures	10
Fibre Optic Cable – Indoor/Outdoor	7	Labeling	11
Fibre Optic Cable – Outdoor	7	Security Devices	11
Fibre Connectors	7	Tools	11
Fibre Optic Patch Cords	7		

Copper Cable



PUL6AM04WH-CEG



PUL6004BUY

Part Number	Description	UOM	MOQ
Unshielded			
PUL6ASD04WH-EG	Category 6A U/UTP cable, 26 AWG, White, LSZH (60332-1), 305m (60m max PL).	Reel	18
PUL6AM04WH-CEG	Category 6A advanced MaTriX U/UTP cable, 23 AWG, White, LSZH (60332-1), 305m.	Reel	18
PUL6004BUY	Category 6 U/UTP cable, 23 AWG, Blue, LSZH (60332-1), 305m.	Box	27
PUC5504IGY	Category 5e U/UTP cable, 24 AWG, Gray, CM, 305m.	Box	36
Shielded			
PFL6X04WH-CEG	Category 6A F/UTP cable, 23 AWG, White, LSZH (60332-1), 305m.	Reel	12
PFC6004BU-G	Category 6 F/UTP cable, 23 AWG, Blue, CM, 305m.	Reel	27

Note: F/UTP means Foil around Unshielded Twisted Pairs = shielded cable.
LSZH means Low Smoke Zero Halogen.

RJ45 Jack Module



CJ6X88TGBL



CJH6X88TGIW



CJS688TGY



CJRCAPBU

Part Number	Description	Std. Pkg. Qty.	Std. Ctn. Qty.
Unshielded			
CJ6X88TGBL	Category 6A RJ45 UTP Mini-Com™ Jack, Black.	1	50
CJ6X88TGBU	Category 6A RJ45 UTP Mini-Com™ Jack, Blue.	1	50
CJ6X88TGIW	Category 6A RJ45 UTP Mini-Com™ Jack, International White.	1	50
CJH6X88TGIW	Category 6A RJ45 shuttered UTP Mini-Com™ Jack, International White.	1	50
Shielded			
CJ688TGBL	Category 6 RJ45 UTP Mini-Com™ Jack, Black.	1	50
CJ688TGBU	Category 6 RJ45 UTP Mini-Com™ Jack, Blue.	1	50
CJ688TGIW	Category 6 RJ45 UTP Mini-Com™ Jack, International White.	1	50
CJH688TGIW	Category 6 RJ45 shuttered UTP Mini-Com™ Jack, International White.	1	50
Termination Cap			
CJ5E88TGBL	Category 5E RJ45 UTP Mini-Com™ Jack, Black.	1	50
CJ5E88TGBU	Category 5E RJ45 UTP Mini-Com™ Jack, Blue.	1	50
CJ5E88TGIW	Category 5E RJ45 UTP Mini-Com™ Jack, International White.	1	50
CJS6X88TGY	Category 6A RJ45 shielded Mini-Com™ Jack, Black.	1	50
CJSH6X88TGY	Category 6A RJ45 shuttered shielded Mini-Com™ Jack, Black.	1	50
CJSH688TGY	Category 6 RJ45 shuttered shielded Mini-Com™ Jack, Black.	1	50
CJRCAPBU	Right angle termination cap for CJ6X88TG, CJH6X88TG.	10	100
CJRCAPIW	Right angle termination cap for CJ688TG, CJH688TG.	10	100

Contact Panduit Customer Service for other colours and bulk packs.

Patch Panels, Kits, and Accessories



UICMPP24BLY



CPP48HDWBLY



CPPA48HDWBLY



DP245E88TGY



SRB19BLY



SRBRRKT

Part Number	Description	Std. Pkg. Qty.	Std. Ctn. Qty.
Modular			
UICMPP24BLY	24-port patch panel, with six UICPPL4BL faceplates.	1	10
UICMPPA24BLY	24-port angled patch panel, with six UICPPL4BL faceplates.	1	10
CPPL24WBLY	24-port patch panel with labels, with six CFFPL4 faceplates.	1	10
CPPLA24WBLY	24-port angled patch panel with labels, with six CFFPL4 faceplates.	1	10
CPP48HDWBLY	48-port high-density patch panel, with rear-mounted faceplates.	1	10
CPPA48HDWBLY	48-port angled high-density patch panel, with rear-mounted faceplates.	1	10
CP24BLY	24-port all-metal shielded patch panel.	1	10
CPA24BLY	24-port angled all-metal shielded patch panel.	1	10
110 Punchdown			
DP245E88TGY	24-port 110 style, Category 5e punchdown patch panel.	1	10
Patch Panel Kits			
UICMPK6G24BL	24-port patch panel (UICMPP24BL), with 24 Category 6 TG jacks (CJ688TGBL).	1	10
CPPK6G24WBL	24-port patch panel (CPPL24WBL), with 24 Category 6 TG jacks (CJ688TGBL).	1	10
Strain Relief			
SRB19BLY	Strain relief bar.	1	10
SRBRRKT	Strain relief bar quick release bracket kit.	1	10

Zone Cords



UZPLWH20M

Part Number	Description	Std. Pkg. Qty.	Std. Ctn. Qty.
UZPLWH20M	Category 6A, RJ45 plug to plug, solid, LSZH white 20 metre.	1	10
UZPLWH30M	Category 6A, RJ45 plug to plug, solid, LSZH white 30 metre	1	10

RJ45 Patch Cords



UTP6ASD*



UTP28X

Part Number	Description	Std. Pkg. Qty.	Std. Ctn. Qty.
Category 6A			
UTP6ASD1M	Category 6A 26 AWG patch cord, CM, White, 1m.	1	10
UTP6ASD1MBU	Category 6A 26 AWG patch cord, CM, Blue, 1m.	1	10
UTP6ASD1.5M	Category 6A 26 AWG patch cord, CM, White, 1.5m.	1	10
UTP6ASD1.5MBU	Category 6A 26 AWG patch cord, CM, Blue, 1.5m.	1	10
UTP6ASD2M	Category 6A 26 AWG patch cord, CM, White, 2m.	1	10
UTP6ASD2MBU	Category 6A 26 AWG patch cord, CM, Blue, 2m.	1	10
UTP6ASD3M	Category 6A 26 AWG patch cord, CM, White, 3m.	1	10
UTP6ASD3MBU	Category 6A 26 AWG patch cord, CM, Blue, 3m.	1	10
Category 6A 28 AWG			
UTP28X1MBU	Category 6A UTP 28 AWG patch cord, CM/LSZH, Blue, 1m.	1	10
UTP28X2MBU	Category 6A UTP 28 AWG patch cord, CM/LSZH, Blue, 2m.	1	10
UTP28X3MBU	Category 6A UTP 28 AWG patch cord, CM/LSZH, Blue, 3m.	1	10

(continued on page 5)

RJ45 Patch Cords (continued)



STP6C*



UTPSP*



UTP28SP*



UTPCH*

Patch Cord Bands



PCBAND**-Q

Part Number	Description	Std. Pkg. Qty.	Std. Ctn. Qty.
-------------	-------------	----------------	----------------

Category 6A Shielded

STP6C1MBU	Category 6A F/UTP patch cord, CM/LSZH, Blue, 1m.	1	10
STP6C1M	Category 6A F/UTP patch cord, CM/LSZH, White, 1m.	1	10
STP6C1.5M	Category 6A F/UTP patch cord, CM/LSZH, White, 1.5m.	1	10
STP6C1.5MBU	Category 6A F/UTP patch cord, CM/LSZH, Blue, 1.5m.	1	10
STP6C2MBU	Category 6A F/UTP patch cord, CM/LSZH, Blue, 2m.	1	10
STP6C2M	Category 6A F/UTP patch cord, CM/LSZH, White, 2m.	1	10
STP6C3MBU	Category 6A F/UTP patch cord, CM/LSZH, Blue, 3m.	1	10
STP6C3M	Category 6A F/UTP patch cord, CM/LSZH, White, 3m.	1	10
STP28X1MBU	Category 6A F/UTP 28 AWG patch cord, Blue, 1m.	1	10
STP28X1.5MBU	Category 6A F/UTP 28 AWG patch cord, Blue, 1.5m.	1	10
STP28X2MBU	Category 6A F/UTP 28 AWG patch cord, Blue, 2m.	1	10
STP28X3MBU	Category 6A F/UTP 28 AWG patch cord, Blue, 3m.	1	10

Category 6

UTPSP1MY	Category 6 UTP patch cord, CM, White, 1m.	1	10
UTPSP1MBUY	Category 6 UTP patch cord, CM, Blue, 1m.	1	10
UTPSP1.5MY	Category 6 UTP patch cord, CM, White, 1.5m.	1	10
UTPSP1.5MBUY	Category 6 UTP patch cord, CM, Blue, 1.5m.	1	10
UTPSP2MY	Category 6 UTP patch cord, CM, White, 2m.	1	10
UTPSP2MBUY	Category 6 UTP patch cord, CM, Blue, 2m.	1	10
UTPSP3MY	Category 6 UTP patch cord, CM, White, 3m.	1	10
UTPSP3MBUY	Category 6 UTP patch cord, CM, Blue, 3m.	1	10

Category 6 28 AWG

UTP28SP8INBU	Category 6 UTP 28 AWG patch cord, CM/LSZH, Blue, 200mm.	1	10
UTP28SP1M	Category 6 UTP 28 AWG patch cord, CM/LSZH, White, 1m.	1	10
UTP28SP1MBU	Category 6 UTP 28 AWG patch cord, CM/LSZH, Blue, 1m.	1	10
UTP28SP1.5M	Category 6 UTP 28 AWG patch cord, CM/LSZH, White, 1.5m.	1	10
UTP28SP1.5MBU	Category 6 UTP 28 AWG patch cord, CM/LSZH, Blue, 1.5m.	1	10
UTP28SP2M	Category 6 UTP 28 AWG patch cord, CM/LSZH, White, 2m.	1	10
UTP28SP2MBU	Category 6 UTP 28 AWG patch cord, CM/LSZH, Blue, 2m.	1	10
UTP28SP3M	Category 6 UTP 28 AWG patch cord, CM/LSZH, White, 3m.	1	10
UTP28SP3MBU	Category 6 UTP 28 AWG patch cord, CM/LSZH, Blue, 3m.	1	10

Category 5e

UTPCH1MY	Category 5e patch cord, CM, White, 1m.	1	10
UTPCH1MBUY	Category 5e patch cord, CM, Blue, 1m.	1	10
UTPCH2MY	Category 5e patch cord, CM, White, 2m.	1	10
UTPCH2MBUY	Category 5e patch cord, CM, Blue, 2m.	1	10
UTPCH3MY	Category 5e patch cord, CM, White, 3m.	1	10
UTPCH3MBUY	Category 5e patch cord, CM, Blue, 3m.	1	10

Contact Customer Service for other colours and lengths.

Part Number	Description	Std. Pkg. Qty.	Std. Ctn. Qty.
PCBAND**-Q	Patch cord band, snap on.	25	25

Replace ** with BL(Black), RD (Red), OR (Orange), YL (Yellow), GR (Green), BU (Blue), or VL (Violet).

Clipsal/HPM Faceplate Adapter Bezel



CAFPAWH-X

Part Number	Description	Std. Pkg. Qty.	Std. Ctn. Qty.
CAFPAWH-X	Clipsal/HPM* faceplate adapter bezel, Black.	10	50
CAFPAWH-X	Clipsal/HPM* faceplate adapter bezel, White.	10	50

*Clipsal is a registered trademark of Schneider Electric (Australia) Pty.Ltd.; HPM is a registered trademark of Legrand Aust. Pty.Ltd.

Faceplate



UICFPHSEA2EW

Part Number	Description	Std. Pkg. Qty.	Std. Ctn. Qty.
UICFPHSEA2EW	Ultimate ID™ Executive Faceplate, two module, horizontal, White.	1	10
UICFPHSEA4EW	Ultimate ID™ Executive Faceplate, four module, horizontal, White.	1	10

Work Station Mini Faceplate



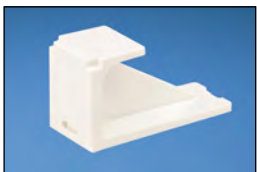
CMAA1IW-X

Part Number	Description	Std. Pkg. Qty.	Std. Ctn. Qty.
CMAA1BL-X	Mini-Com™ Adapter to suit 25mm x 25mm cut out, Black.	10	100
CMAA1IW-X	Mini-Com™ Adapter to suit 25mm x 25mm cut out, Off White.	10	100

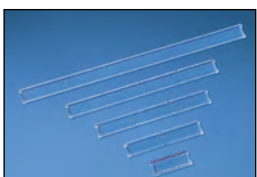
Surface Mount Box



CBX2IW-AY



CMBIW-X



**UILC2CL-X
UILC4CL-X**

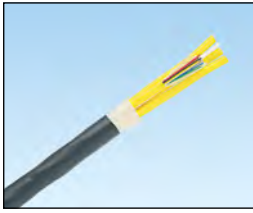
Part Number	Description	Std. Pkg. Qty.	Std. Ctn. Qty.
CBX2IW-AY	2-port surface mount box, Off White.	1	10
CBX2WH-AY	2-port surface mount box, White.	1	10
CBX4IW-AY	4-port surface mount box, Off White.	1	10
CBX4WH-AY	4-port surface mount box, White.	1	10
CBXF6WH-AY	6-port surface mount box, White.	1	10
CBXFM6CRD	6-port surface mount box with Red metal base.	1	–

Blank Modules and Covers

CMBBL-X	Mini-Com™ 1-port blank module, Black.	10	50
CMBIW-X	Mini-Com™ 1-port blank module, Off White.	10	50
CMBWH-X	Mini-Com™ 1-port blank module, White.	10	50
UILC2CL-X	2-port label cover for use with Ultimate ID™, Clear.	10	100
UILC4CL-X	4-port label cover for use with Ultimate ID™, Clear.	10	100
UILC1EW-X	Replacement screw cover for Ultimate ID™ Faceplate, European White.	10	100

Contact Panduit Customer Service for other colours.

Fibre Optic Cable – Indoor/Outdoor



Part Number	Description	UOM	MOQ
FLKLX06	6-fibre OM3 multimode LSZH tight buffered.	Metre	1000
FLKLX12	12-fibre OM3 multimode LSZH tight buffered.	Metre	1000
FLKLZ06	6-fibre OM4 multimode LSZH tight buffered.	Metre	1000
FLKLZ12	12-fibre OM4 multimode LSZH tight buffered.	Metre	1000
FLKLZ24	24-fibre OM4 multimode LSZH tight buffered.	Metre	1000
FLKL906	6-fibre OS2 singlemode LSZH tight buffered.	Metre	1000
FLKL912	12-fibre OS2 singlemode LSZH tight buffered.	Metre	1000

Fibre Optic Cable – Outdoor

Part Number	Description	UOM	MOQ
FLCRZ06Y	6-fibre OM4 multimode riser, loose tube.	Metre	1000
FLCRZ12Y	12-fibre OM4 multimode riser, loose tube.	Metre	1000
FLNRZ24Y	24-fibre OM4 multimode riser, loose tube.	Metre	1000
FLCR906Y	6-fibre OS2 singlemode, riser, loose tube.	Metre	1000
FLCR912Y	12-fibre OS2 singlemode, riser, loose tube.	Metre	1000
FLNR924Y	24-fibre OS2 singlemode riser, loose tube.	Metre	1000

Fibre Connectors



FLCSMCXAQY



FSCSCBU

Part Number	Description	Std. Pkg. Qty.	Std. Ctn. Qty.
OptiCam™ Pre-Polished Connectors*			
FLCSMCXAQY	LC 50/125µm OM3/OM4 multimode simplex connector, Aqua boot.	1	10
FLCSMCBUY	LC 9/125µm singlemode simplex connector, Blue boot.	1	10
FSCMCXAQ	SC 50/125µm OM3/OM4 multimode simplex connector, Aqua boot.	1	10
FSCSCBU	SC 9/125µm singlemode simplex connector, Blue boot.	1	10

*See page 11 for OptiCam™ Tool Kit.

Fibre Optic Patch Cords



NKFPX23LSSSM001



NKFPX2ELLLSM001

Part Number	Description	Std. Pkg. Qty.	Std. Ctn. Qty.
NKFPX23LSSSM001	2-fibre SC OM3, 3.0mm LSZH jacket duplex patch cord, 1m.	1	—
NKFPX23LSSSM002	2-fibre SC OM3, 3.0mm LSZH jacket duplex patch cord, 2m.	1	25
NKFPX23LSSSM003	2-fibre SC OM3, 3.0mm LSZH jacket duplex patch cord, 3m.	1	25
NKFP923LSSSM001	2-fibre SC OS2, 3.0mm LSZH jacket duplex patch cord, 1m.	1	25
NKFP923LSSSM002	2-fibre SC OS2, 3.0mm LSZH jacket duplex patch cord, 2m.	1	25
NKFP923LSSSM003	2-fibre SC OS2, 3.0mm LSZH jacket duplex patch cord, 3m.	1	25
NKFPX2ELLLSM001	2-fibre LC OM3, 1.6mm LSZH jacket duplex patch cord, 1m.	1	50
NKFPX2ELLLSM002	2-fibre LC OM3, 1.6mm LSZH jacket duplex patch cord, 2m.	1	50
NKFPX2ELLLSM003	2-fibre LC OM3, 1.6mm LSZH jacket duplex patch cord, 3m.	1	50
NKFP92ELLLSM001	2-fibre LC OS2, 1.6mm LSZH jacket duplex patch cord, 1m.	1	50
NKFP92ELLLSM002	2-fibre LC OS2, 1.6mm LSZH jacket duplex patch cord, 2m.	1	50
NKFP92ELLLSM003	2-fibre LC OS2, 1.6mm LSZH jacket duplex patch cord, 3m.	1	50

Contact Panduit Customer Service for other lengths.

Fibre Enclosures



FMT1



FCE1U



FOSMF

Part Number	Description	Std. Pkg. Qty.	Std. Ctn. Qty.
FMT1	Rack-mount fibre tray, 1 RU. Requires 24-port modular patch panel and Mini-Com™ Adapter Modules.	1	1
FMT1A	Rack-mount fibre tray, angled, 1 RU. Requires 24-port modular patch panel and Mini-Com™ Adapter Modules.	1	1
CFAPPBL1	Flat fibre patch panel. Accepts four fibre adapter panels or QuickNet™ Cassettes.	1	1
CFAPPBL1A	Angled fibre patch panel. Accepts four fibre adapter panels or QuickNet™ Cassettes.	1	1
FCE1U	Rack-mount fibre enclosure, 1 RU. Accepts four fibre adapter panels or QuickNet™ Cassettes.	1	1
FCE4U	Rack-mount fibre enclosure, 4 RU. Accepts twelve fibre adapter panels or QuickNet™ Cassettes.	1	1
FWME2	Wall mount enclosure accepts two fibre adapter panels or QuickNet™ Cassettes.	1	1
FOSMF	Fibre optic splice module, 24 fusion, for rack-mount enclosure.	1	1
FSC24	Fibre splice chip accommodates and protects up to 24 fusion splices, suits wall-mount or rack-mount enclosure.	1	1
FOSP61-C	Fibre splice protector.	100	100

Fibre Adapter Module and Panels



CMDAQSCZBL



FAP6WAQDSCZ



FXTRL7N7NANM005



FC2XN-12-10AS

Part Number	Description	Std. Pkg. Qty.	Std. Ctn. Qty.
Fibre Adapter Modules			
CMDAQSCZBL	SC duplex (Aqua) adapter (Black) Mini-Com™ Module Assembly, zirconia.	1	10
CMDBUSCZBU	SC duplex (Blue) adapter (Blue) Mini-Com™ Module Assembly, zirconia.	1	10
CMDSAQLCZBL	Duplex LC Sr./Sr. (Aqua) adapter (Black) Mini-Com™ Module Assembly, zirconia.	1	10
CMDSL CZBU	Duplex LC Sr./Sr. (Blue) adapter (Blue) Mini-Com™ Module Assembly, zirconia.	1	10
Fibre Adapter Panels			
FAP6WAQDSCZ	Fibre adapter panel with six SC duplex (Aqua) adapters, zirconia.	1	10
FAP6WBUDSCZ	Fibre adapter panel with six SC duplex (Blue) adapters, zirconia.	1	10
FAP6WAQDLCZ	Fibre adapter panel with six LC duplex (Aqua) adapters, zirconia.	1	10
FAP6WBUDLCZ	Fibre adapter panel with six LC duplex (Blue) adapters, zirconia.	1	10
QuickNet™ MPO Cassettes and Interconnect Cables			
FXTRL7N7NANM005	12 core PanMPO™ Interconnect, OM3, 5m.	1	10
FXTRL7N7NANM010	12 core PanMPO™ Interconnect, OM3, 10m.	1	10
FXTRL7N7NANM015	12 core PanMPO™ Interconnect, OM3, 15m.	1	10
FC2XN-12-10AS	Fibre cassette, 6 duplex LC to MPO, 12 core Method A Standard, OM3.	1	10
FC2XN-12-10AF	Fibre cassette, 6 duplex LC to MPO, 12 core modified Method A, flipped, OM3.	1	10

Fibre Optic Pigtails



NKFPX1BN3NNM001



NKFPX1BN1NNM001

Part Number	Description	Std. Pkg. Qty.	Std. Ctn. Qty.
NKFPX1BN3NNM001	OM3 1-fibre, 900µm, buffered, SC to pigtail, 1m.	1	50
NKFP91BN3NNM001	OS2 1-fibre, 900µm, buffered, SC to pigtail, 1m.	1	25
NKFPX1BN1NNM001	OM3 1-fibre, 900µm, buffered, LC to pigtail, 1m.	1	50
NKFPX1BN1NKM001	OM3 1-fibre, 900µm, buffered, LC to pigtail, 1m. (colour coded set of 12).	1	25
NKFP91BN1NNM001	OS2 1-fibre, 900µm, buffered, LC to pigtail, 1m.	1	50
FZ1BN1NNNSNM001	OM4 1-fibre, 900µm, buffered, LC to pigtail, 1m.	1	10
NKFP91BN1NKM001	OS2 1-fibre, 900µm, buffered, LC to pigtail, 1m. (colour coded set of 12).	1	25

Cabinet



S6512B

Part Number	Description	Std. Pkg. Qty.	Std. Ctn. Qty.
S8512BA9	45 RU 800mm wide x 1070mm deep, perforated front and rear door, solid side panels.	1	1
S6512B	45 RU 600mm wide x 1070mm deep, perforated front and rear door, solid side panels.	1	1
E6412B2	24 RU 600mm wide x 1070mm deep, perforated front and rear doors, solid side panels.	1	1
E6212B1	12 RU 600mm wide x 1070mm deep, perforated front and rear doors, solid side panels.	1	1
PZC12W	Wall mount cabinet with windowed front door.	1	1

Racks, Shelves and Accessories



R4PCN

Part Number	Description	Std. Pkg. Qty.	Std. Ctn. Qty.
Racks			
R2P	2 post rack, 45 RU, with threaded rails.	1	1
R4PCN	4 post rack, 45 RU with cage nut rails, 760mm deep.	1	1
Shelves			
SRM19FM1	Front mount shelf, 1 RU, 480mm deep.	1	1
RSHLF	Front and rear mount shelf, 1 RU, 760mm deep.	1	1
Rack Accessories			
S1224-C	#12-24 screws.	100	1000
CNWS1224-C	#12-24 cage nut with screws.	100	1000
CNWSM6-C	M6 cage nut with screws.	100	1000
R2PPDUB	PDU mounting kit, suits 2 post rack and 4 post rack.	1	1
Grounding			
RGCBNJ660P22	Common bonding jumper and HTAP.	1	10
CNBK	Green bonding #12-24 cage nuts and bonding screws (package of 50).	1	10
RGTBSG-C	Green thread-forming bonding screw, #12-24 x 1/2".	100	1000

Cable Managers



NMF4



WMPSE



PRV8 WMPVHC45E

Part Number	Description	Std. Pkg. Qty.	Std. Ctn. Qty.
NMF4	NetManager™ Horizontal cable manager high capacity front only, 4 RU.	1	1
WMPSE	PatchLink™ Horizontal Cable Manager, front and rear, 1 RU.	1	1
WMP1E	PatchLink™ Horizontal Cable Manager, front and rear, 2 RU.	1	1
WMPFSE	PatchLink™ Horizontal Cable Manager, front only, 1 RU.	1	1
WMPF1E	PatchLink™ Horizontal Cable Manager, front only, 2 RU.	1	1
PRV8	PatchRunner™ Dual-Sided Vertical Cable Manager, 8 inch.	1	1
PRVF8	PatchRunner™ Single-Sided Vertical Cable Manager, 8 inch.	1	1
PRD8	PatchRunner™ Door, 8 inch.	1	1
PRV12	PatchRunner™ Dual-Sided Vertical Cable Manager, 12 inch.	1	1
PRD12	PatchRunner™ Door, 12 inch.	1	1
PREPB1	PatchRunner™ End Panel.	1	1
WMPV45E	NetRunner™ Dual-Sided Vertical Cable Manager, 125mm wide.	1	1
WMPVHC45E	NetRunner™ Dual-Sided High-Capacity Vertical Cable Manager, 170mm wide.	1	1

Cable Manager Capacity Chart

Part Number	Description	Front				Rear			
		Cat. 6A (28AWG)	Cat. 6A-SD (26AWG)	Cat. 6 (28AWG)	Cat. 6 (24AWG)	Cat. 6A (28AWG)	Cat. 6A-SD (26AWG)	Cat. 6 (28AWG)	Cat. 6 (24AWG)
NMF4	Horizontal cable manager high capacity front only, 4 RU.	355	210	540	220	—	—	—	—
WMPSE	PatchLink™ Horizontal Cable Manager, front and rear, 1 RU.	40	24	61	25	68	40	104	42
WMP1E	PatchLink™ Horizontal Cable Manager, front and rear, 2 RU.	101	60	153	62	134	80	204	83
WMPFSE	PatchLink™ Horizontal Cable Manager, front only, 1 RU.	40	24	61	25	—	—	—	—
WMPF1E	PatchLink™ Horizontal Cable Manager, front only, 2 RU.	101	60	153	62	—	—	—	—
PRV8	PatchRunner™ Dual-Sided Vertical Cable Manager, 200mm wide.	808	480	1229	500	580	344	882	359
PRVF8	PatchRunner™ Single-Sided Vertical Cable Manager, 200mm wide.	808	480	1229	500	—	—	—	—
PRV12	PatchRunner™ Dual-Sided Vertical Cable Manager, 300mm wide.	1297	771	1973	804	918	545	1396	569
WMPV45E	NetRunner™ Dual-Sided Vertical Cable Manager, 100mm wide.	275	163	418	170	275	163	418	170
WMPVHC45E	NetRunner™ Dual-Sided High Capacity Vertical Cable Manager, 200mm wide.	511	304	778	317	511	304	778	317

Power Distribution Unit



HBOD2J0AA10M1

Part Number	Description	Std. Pkg. Qty.	Std. Ctn. Qty.
HBOD2J0AA10M1	Horizontal power strip with a 16 A, 230V, 10 IEC C-13 receptacles, with C-20 power inlet.	1	1
VBOD2J0AA20M1	Vertical power strip with a 16 A, 230V, 20 IEC C-13 receptacles, with C-20 power inlet.	1	1

Blanking Panels



TLBP1S-V

Part Number	Description	Std. Pkg. Qty.	Std. Ctn. Qty.
TLBP1S-V	Toolless blanking panel, 1 RU, suit cage nut holes.	5	50
CPAF1BLY	Blanking panel, angled, 1 RU.	1	10

Enclosures



WMCPE



PZAEWM3

Part Number	Description	Std. Pkg. Qty.	Std. Ctn. Qty.
Consolidation Point			
WMCPE	Wall mount punchdown consolidation point enclosure.	1	1
GPB24-X	GP6™ Category 6/6A Punchdown base, 96 pair.	10	10
GPCB4-CY	GP6™ Category 6/6A 4-Pair Punchdown Connector Block.	100	100
Zone Enclosures			
PZAEWM3	Active wall mount enclosure, 4 RU passive, 2 RU active..	1	1
PZICEE	In-ceiling consolidation point enclosure, 8 RU capacity.	1	1
PZLRB4U	Ladder rack bracket, 4 RU.	1	1

Labeling



LS8EQ-KIT

Part Number	Description	Std. Pkg. Qty.	Std. Ctn. Qty.
LS8EQ-KIT	LS8EQ hand-held printer with QWERTY keypad.	1	1
LS8E-ACA	240 VAC Power adapter.	1	1
UILS8BW	Ultimate ID™ Label Cassette.	1	10
C252X030FJC	Modular patch panel (CP) adhesive label cassette.	1	10
C261X035Y1C	Modular patch panel (CPPL) label cassette.	1	10
S100X150VAC	Cable self-laminating label cassette.	1	10
R100X150V1C	Turn-Tell™ Patch Cord Label Cassette.	1	10

Security Devices



PSL-LCAB-AQ



FLCCLIW-X



PSL-DCJB



PSL-DCPLRX

Part Number	Description	Std. Pkg. Qty.	Std. Ctn. Qty.
PSL-LCAB-AQ	LC duplex adapter blockout device, ten devices (Aqua) and one removal tool (Black).	1	20
PSL-LCAB-BU	LC duplex adapter blockout device, ten devices (Blue) and one removal tool (Black).	1	20
FLCCLIW-X	LC patch plug lock-in device, ten devices and one removal tool.	10	100
PSL-DCJB-BL	Jack module blockout device, ten block-outs (Black) and one removal tool (Black).	1	20
PSL-DCJB-BU	Jack module blockout device, ten block-outs (Blue) and one removal tool (Black).	1	20
PSL-DCJB	Jack module blockout device, ten block-outs (Red) and one removal tool (Black).	1	20
PSL-DCPLRX-BL	Recessed RJ45 plug lock-in device, ten devices (Black) and one installation/removal tool (Black).	1	20
PSL-DCPLRX-BU	Recessed RJ45 plug lock-in device, ten devices (Blue) and one installation/removal tool (Black).	1	20
PSL-DCPLRX	Recessed RJ45 plug lock-in device, ten devices (Red) and one installation/removal tool (Black).	1	20

Tools



EGJT



TGJT



CBOT24K

Part Number	Description	Std. Pkg. Qty.	Std. Ctn. Qty.
EGJT	TG jack termination tool.	1	—
TGJT	TG jack termination tool, for high-volume installations.	1	—
CJAST	Copper cable jacket stripper.	1	1
CWST	Copper wire snips.	1	1
PDT110	110 punchdown tool.	1	1
GPST	GP6™ Punchdown Tool.	1	1
GPDTM	GP6™ 4-Pair Punchdown Tool.	1	1
CBOT24K	Cable bundle organising tool.	1	10
FCAMKIT	OptiCam™ Termination Kit	1	1



PANDUIT™

Panduit International Ltd.
30 – 36 Kitchen Road
Dandenong 3175
Australia

aus-csvm@panduit.com
1-800-PANDUIT

www.panduit.com