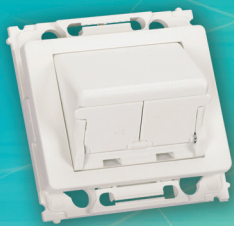
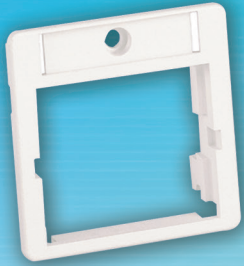


Outlets Offering for EMEA



PANDUIT[™]

building a smarter,
unified business foundation
Connect. Manage. Automate.

Workstation Roadmap

Panduit offers the most comprehensive selection of communication outlets to extend your copper, audio/video and fibre cabling system to the work area. From a standard work station configuration to a MuTOA application, Panduit has a solution to support your requirements.

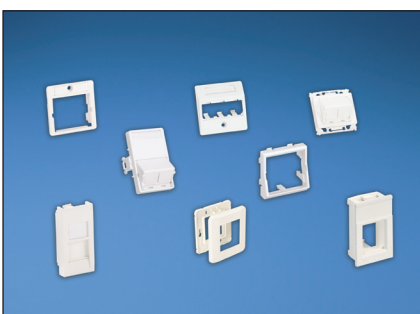
- Modular, accepting all Mini-Com™ Modules for copper, fibre and audio/video applications
- Superior design provides lower profile, higher density outlet products, creating a cost-effective solution for easy moves, adds and changes
- Aesthetically pleasing solution to complement all types of work areas
- Ultimate ID™ components are part of a complete system for identification designed to efficiently support ANSI/TIA-606-B standard labelling requirements

Work area outlets products are easily installed and provide a broad range of solutions. Outlets solutions consist of a variety of faceplate and adapter styles and port densities.



1

**Mini-Com™
Faceplates**



2

**Mini-Com™ Modular
Furniture Faceplates**



3

**Mini-Com™ Surface
Mount Boxes**



UK Selections



CBUK**Y



CBUK**-2GY



CFPUKS2S**Y



CFPUKS4SAW-2GY



CFPL86S2S**S



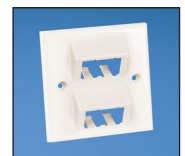
CFPUKS2B**Y



CFPUKS3**Y



CFP86S2**Y



CFP86S4**Y



CFPLUKF2SAW



CFPLUKF4SAW



CM6CAW-X



CM6CSAW-X



CM6CSSAW-X



CM6CESAW-X



CM6CESSAW-X

| Part Number | Description | Colour** | Label Type^ |
|-------------|-------------|----------|-------------|
|-------------|-------------|----------|-------------|

Faceplate Frames

| | | | |
|------------|--|--------------|---|
| CBUKAWY | 86mm x 86mm, single gang faceplate frame with label. Accepts one 1/2-size module insert***. | Arctic White | C |
| CBUKAW-2GY | 86mm x 146mm, double gang faceplate frame with labels. Accepts two 1/2-size module inserts***. | Arctic White | C |

Sloped Shuttered Faceplate Kits

| | | | |
|----------------|--|--------------------|---|
| CFPUKS2SAWY | 86mm x 86mm single gang faceplate frame and one 1/2-size sloped shuttered module insert. | Arctic White | C |
| CFPUKS4SAW-2GY | 86mm x 146mm double gang faceplate frame and two 1/2-size sloped shuttered module inserts. | Arctic White | C |
| CFPL86S2SIGS | 86mm x 86mm single gang stainless steel two-piece faceplate frame includes two-position sloped shuttered adapter with labels and icon slots. | International Gray | C |

Sloped Faceplate

| | | | |
|-------------|--|--------------|---|
| CFPUKS2BAWY | 86mm x 86mm single gang faceplate holds up to two Mini-Com™ Modules. Supplied with CMB blank module. | Arctic White | F |
| CFPUKS3AWY | 86mm x 86mm single gang faceplate holds up to three Mini-Com™ Modules. | Arctic White | F |
| CFP86S2AWY | 86mm x 86mm single gang sloped faceplate with screw cover. Accepts two Mini-Com™ Modules. | Arctic White | F |
| CFP86S4AWY | 86mm x 86mm single gang sloped faceplate with screw cover. Accepts four Mini-Com™ Modules. | Arctic White | F |

Flat Shuttered Faceplates

| | | | |
|-------------|---|--------------|---|
| CFPLUKF2SAW | Single gang, 86mm x 86mm shuttered faceplate with label and icon slots. Accepts up to two Mini-Com™ Modules. Includes two M3.5-0.5x30mm panhead mounting screws. | Arctic White | C |
| CFPLUKF4SAW | Single gang, 86mm x 86mm shuttered faceplate with label and icon slots. Accepts up to four Mini-Com™ Modules. Includes two M3.5-0.5 x 30mm panhead mounting screws. | Arctic White | C |

Adapters

| | | | |
|-------------|---|--------------|---|
| CM6CAW-X | Unshuttered module snaps into standard UK LJU6C floor box mounting plates, faceplates and patch panels and holds a single Mini-Com™ Module. Compatible with standard UK LJU6C openings with 22.3mm x 36.9mm dimensions. | Arctic White | G |
| CM6CSAW-X | Shuttered module snaps into standard UK LJU6C floor box mounting plates, faceplates and patch panels and holds a single Mini-Com™ Module. Compatible with standard UK LJU6C openings with 22.3mm x 36.9mm dimensions. | Arctic White | G |
| CM6CSSAW-X | Sloped, shuttered module snaps into standard UK LJU6C floor box mounting plates, faceplates and patch panels and holds a single Mini-Com™ Module. Compatible with standard UK LJU6C openings with 22.3mm x 36.9mm dimensions. | Arctic White | G |
| CM6CESAW-X | 25mm x 50mm shuttered Euro-mod adapter accepts one Mini-Com™ Module. | Arctic White | G |
| CM6CESSAW-X | 25mm x 50mm sloped, shuttered Euro-mod adapter accepts one Mini-Com™ Module. | Arctic White | G |

**Visit www.panduit.com or contact customer service for availability of other colours.

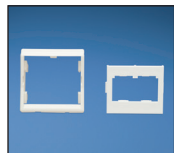
***See page 10 for compatible 1/2-size inserts.

^See page 14 for compatible labels.

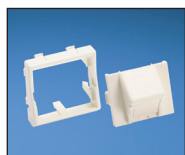
France Selections



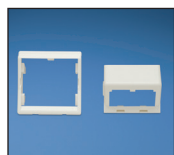
FAF80AW



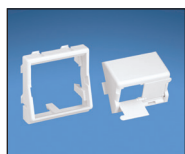
CFPFF2**



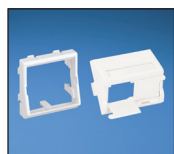
CFPFS1SAW



CFPFS2**



CFPFS2S**



CFP45LS2S**



CBAFW



CFPFLS1SAW



CFPFLS2SAW



CFA1SAW-X

| Part Number | Description | Colour** | Label Type^ |
|-------------|-------------|----------|-------------|
|-------------|-------------|----------|-------------|

Faceplate Frames

| | | | |
|---------|--|--------------|---|
| FAF80AW | 80mm x 80mm faceplate frame accepts 45mm x 45mm or 22.5mm x 45mm adapters which snap in and out of faceplate frame. Two-piece frame includes screw-mount base and snap-on faceplate that conceals screws. Base is compatible with standard DIN openings. | Arctic White | — |
|---------|--|--------------|---|

Adapter Kits

| | | | |
|-------------|---|--------------|---|
| CFPFF2AW | 45mm x 45mm adapter with one 1/2-size flat module insert that accepts two Mini-Com™ Modules. | Arctic White | F |
| CFPFS1SAW | 45mm x 45mm adapter with one 1/2-size sloped shuttered insert that accepts one Mini-Com™ Module. | Arctic White | G |
| CFPFS2AW | 45mm x 45mm adapter with one 1/2-size sloped module insert that accepts up to two Mini-Com™ Modules. | Arctic White | F |
| CFPFS2SAW | 45mm x 45mm adapter with one 1/2-size sloped shuttered module insert that accepts up to two Mini-Com™ Modules. | Arctic White | F |
| CFP45LS2SAW | 45mm x 45mm adapter with one 1/2-size sloped shuttered module insert with label and label cover. Accepts up to two Mini-Com™ Modules. | Arctic White | D |

Adapters

| | | | |
|------------|--|--------------|---|
| CBAFW | 45mm x 45mm adapter frame, accepts one 1/2-size module insert***. | Arctic White | — |
| CFPFLS1SAW | 45mm x 45mm adapter with one-port sloped shuttered module with labels and icon slots. Accepts a single Mini-Com™ Module. | Arctic White | C |
| CFPFLS2SAW | 45mm x 45mm adapter with two-port sloped shuttered module with labels and icon slots. Accepts up to two Mini-Com™ Modules. | Arctic White | C |
| CFA1SAW-X | 22.5mm x 45mm shuttered adapter. Accepts a single Mini-Com™ Module. | Arctic White | E |

**Visit www.panduit.com or contact customer service for availability of other colours.

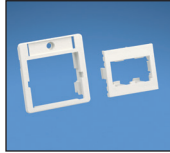
***See page 10 for compatible 1/2-size inserts.

^See page 14 for compatible labels.

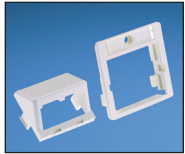
Germany Selections



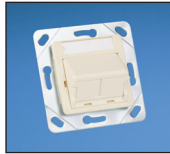
CFPE3**Y



CFPAGF2**Y



CFPAGS2**Y



CFPAGS2S**Y



FCFP**



CBAG**Y



CHES2**Y



CHES2S**Y



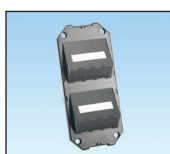
CHES3**Y



CFPGFB3BL



CFPGAS3SBL



CFPGAS6SBL



CFPGAS9SBL

| Part Number | Description | Colour** | Label Type^^ |
|-------------------|---|--------------|--------------|
| Faceplates | | | |
| CFPE3AWY | 80mm x 80mm faceplate frame and one 55mm x 55mm sloped faceplate. Accepts up to three Mini-Com™ Modules. Supplied with mounting screws, metal mounting plate, label, and label cover. | Arctic White | C |
| CFPAGF2AWY | 50mm x 50mm adapter and one 1/2-size flat module insert that accepts up to two Mini-Com™ Modules. Supplied with mounting screws and metal mounting plate. | Arctic White | C |
| CFPAGS2AWY | 50mm x 50mm adapter and one 1/2-size sloped module insert that accepts up to two Mini-Com™ Modules. Supplied with mounting screws and metal mounting plate. | Arctic White | C |
| CFPAGS2SAWY | 50mm x 50mm adapter and one 1/2-size sloped shuttered module insert that accepts up to two Mini-Com™ Modules. Supplied with mounting screws and metal mounting plate. | Arctic White | — |
| FCFPAW | 80mm x 80mm faceplate frame accepts all Panduit 50mm x 50mm adapters and the CHES3**Y adapter. | Arctic White | C |
| CBAGAWY | 50mm x 50mm adapter for 1/2-size inserts. Includes label and label cover***. Supplied with mounting screws and metal mounting plate. | Arctic White | C |
| CHES2AWY | 50mm x 50mm sloped faceplate holds up to two Mini-Com™ Modules. Supplied with mounting screws, metal mounting plate, label and label cover and icon slots. | Arctic White | C |
| CHES2SAWY | 50mm x 50mm sloped shuttered faceplate holds up to two Mini-Com™ Modules. Supplied with mounting screws, metal mounting plate, label and label cover and icon slots. | Arctic White | C |
| CHES3AWY | 55mm x 55mm sloped faceplate holds up to three Mini-Com™ Modules. Supplied with mounting screws, metal mounting plate, label and label cover. | Arctic White | C |
| CFPGFB3BL | Floor box sloped faceplate holds up to three Mini-Com™ Modules. Supplied with label and label cover. Compatible with a variety of German floor boxes. | Black | C |
| CFPGAS3SBL | Mini-Com™ 3-port sloped shuttered faceplate, mounts to Ackermann^ GB2 Sub Box. Includes label and label covers for each available port. | Black | A |
| CFPGAS6SBL | Mini-Com™ 6-port sloped shuttered faceplate. Mounts to Ackermann^ GB2 Sub Box. Includes label and label covers for each available port. | Black | A |
| CFPGAS9SBL | Mini-Com™ 9-port sloped shuttered faceplate, mounts to Ackermann^ GB3 Sub Box. Includes three labels and label covers to identify the nine available ports. | Black | A |

**Visit www.panduit.com or contact customer service for availability of other colours.

^Ackermann is a trademark of Novar PLC, Weybridge, Surrey, United Kingdom.

***See page 10 for compatible 1/2-size inserts.

^^See page 14 for compatible labels.

Italy Selections



CFPH2**



CFPHS2**



CFPH4**



CFPHS4**



UICFPH2**



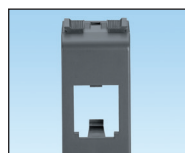
UICFPHSE2**



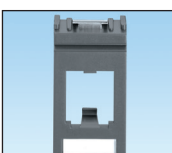
UICFPH4**



UICFPHSE4**



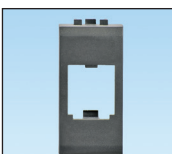
CGAGY-X



CVIA1**-X



CBTAL1BL-X



CBTA1BL-X



CBTAL1**-X



CBTA1**-X

| Part Number | Description | Colour** | Label Type*** |
|-------------------|--|-----------|---------------|
| Faceplates | | | |
| CFPH2IW | Single gang, horizontal faceplate accepts two Mini-Com™ Modules. | Off White | F |
| CFPHS2IW | Single gang sloped horizontal faceplate accepts two Mini-Com™ Modules. | Off White | F |
| CFPH4IW | Single gang, horizontal faceplate accepts four Mini-Com™ Modules. | Off White | F |
| CFPHS4IW | Single gang sloped horizontal faceplate accepts four Mini-Com™ Modules. Includes label and label cover. | Off White | A |
| UICFPH2IW | Single gang horizontal Ultimate ID™ faceplate holds up to two Mini-Com™ Modules. | Off White | H |
| UICFPHSE2IW | Single gang, horizontal sloped Ultimate ID™ faceplate holds up to two Mini-Com™ Modules. | Off White | H |
| UICFPH4IW | Single gang horizontal Ultimate ID™ faceplate holds up to four Mini-Com™ Modules. | Off White | H |
| UICFPHSE4IW | Single gang, horizontal sloped Ultimate ID™ faceplate holds up to four Mini-Com™ Modules. | Off White | H |
| Adapters | | | |
| CGAGY-X | Adapter holds one Mini-Com™ Module in a Gewiss^ Playbus Series Faceplate. | Grey | G |
| CVIA1GY-X | Adapter holds one Mini-Com™ Module in a Vimar^^ IDEA Series Faceplate. | Grey | — |
| CBTAL1BL-X | Adapter with label pocket accepts one Mini-Com™ Module, for Bticino‡ Living International series faceplates. | Black | E |
| CBTA1BL-X | Adapter accepts one Mini-Com™ Module, for Bticino‡ Living International series faceplates. | Black | G |
| CBTAL1WH-X | Adapter with label pocket accepts one Mini-Com™ Module, for Bticino‡ Light series faceplates. | White | E |
| CBTA1WH-X | Adapter accepts one Mini-Com™ Module, for Bticino‡ Light series faceplates. | White | G |

**Visit www.panduit.com or contact customer service for availability of other colours.

^Gewiss is a registered trademark of Gewiss S.P.A. of Italy.

^^Vimar is a registered trademark of Vimar SPA.

‡Bticino is a registered trademark of Bticino S.P.A. of Italy.

***See page 14 for compatible labels.

Denmark Selections



CFPDS2EWY



CFPDS2S**



CFPDPS2S**



CHLKCLS2S**



CFD66S2S**

| Part Number | Description | Colour** | Label Type*** |
|-----------------------|---|----------------|---------------|
| Faceplate Kits | | | |
| CFPDS2EWY | Danish 77.1mm x 50.4mm faceplate with one 1/2-size sloped module insert. Holds up to two Mini-Com™ Modules. Supplied with label and label cover. | European White | C |
| CFPDS2SEWY | Danish 77.1mm x 50.4mm faceplate with one 1/2-size sloped shuttered module insert. Holds up to two Mini-Com™ Modules. Supplied with label and label cover. | European White | C |
| CFPDPS2SEW | Denmark faceplate with one 1/2-size sloped shuttered insert. Holds up to two Mini-Com™ Modules. Supplied with label and label cover. | European White | C |
| CHLKCLS2SEW | Mini-Com™ faceplate for use with LK Clic'Line^ Series faceplate snaps to LK back box. Includes one 1/2-size sloped shuttered insert that holds up to two Mini-Com™ Modules. | European White | C |
| Adapters | | | |
| CFD66S2SEW | Mini-Com™ 2-position, sloped shuttered OPUS 66^ adapter holds up to two Mini-Com™ Modules. Compatible with in-wall and surface mount installation. | European White | F |

**Visit www.panduit.com or contact customer service for availability of other colours.

^Clic'Line is a trademark of Lauritz Knudsen A/S, Ballerup, Denmark.

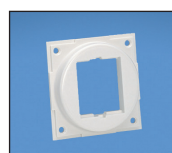
^Opus 66 is a trademark of Lauritz Knudsen A/S, Ballerup, Denmark.

***See page 14 for compatible labels.

Switzerland Selections



CFPCH3AW



CBCHAW

| Part Number | Description | Colour** | Label Type^ |
|------------------------|---|--------------|-------------|
| Faceplate | | | |
| CFPCH3AW | 37.5mm x 63mm faceplate holds up to three Mini-Com™ Modules. | Arctic White | G |
| Faceplate Frame | | | |
| CBCHAW | 64mm diameter faceplate frame accepts one 1/2-size module insert***. For use with Feller^ trunking box. | Arctic White | — |

**Visit www.panduit.com or contact customer service for availability of other colours.

***See page 10 for compatible 1/2-size inserts.

^See page 14 for compatible labels.

^Feller AG operates as a subsidiary of Schneider Electric S.A.

Adapter for Galea and Valena Faceplates



CGVA2BL

| Part Number | Description | Colour** | Label Type*** |
|-------------|---|----------|---------------|
| CGVA2BL | Mini-Com™ 2-port adapter to fit Galea^ and Valena^ faceplates. Holds up to two Mini-Com™ Modules. | Black | — |

**Visit www.panduit.com or contact customer service for availability of other colours.

^Galea and Valena are trademarks of Legrand, Limoges, France.

***See page 14 for compatible labels.

Elko Faceplate



CES3AWY

| Part Number | Description | Colour** | Label Type^^ |
|-------------|---|--------------|--------------|
| CES3AWY | Sloped faceplate holds up to three Mini-Com™ Modules. For use with Elko^ faceplate frame. Includes back plate, label and label cover and mounting screws. | Arctic White | C |

**Visit www.panduit.com or contact customer service for availability of other colours.

^Elko is a trademark of ELKO AS, Sandvika, Norway.

^^See page 14 for compatible labels.

Raceway/Trunking Faceplates



T70FH2**



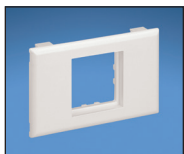
T70FH4**



T70FV2**



T70FV4**



T70BL1**



T70BL2**



T70BH1**



T70BH2**



T70B1**



T70B2**



CFPTS4AW



CFTSL4**

| Part Number | Description | Colour** | Label Type^^ |
|-------------|-------------|----------|--------------|
|-------------|-------------|----------|--------------|

For use with Panduit T-70 and Fast-Snap outlet boxes

| | | | |
|----------|---|--------------|---|
| T70FH2AW | Snap-on horizontal sloped communication faceplate. Accepts two Panduit Mini-Com™ modules (not included). No additional mounting hardware required. | Arctic White | F |
| T70FH4AW | Snap-on horizontal sloped communication faceplate. Accepts four Panduit Mini-Com™ modules (not included). No additional mounting hardware required. | Arctic White | I |
| T70FV2AW | Snap-on vertical sloped communication faceplate. Accepts two Panduit Mini-Com™ modules (not included). No additional mounting hardware required. | Arctic White | F |
| T70FV4AW | Snap-on vertical sloped communication faceplate. Accepts four Panduit Mini-Com™ modules (not included). No additional mounting hardware required. | Arctic White | F |
| T70BL1AW | Single gang snap-on electrical/communication faceplate accepts one (1) 45X45mm French power outlet module or two (2) half size modules. | Arctic White | F |
| T70BL2AW | Single gang snap-on electrical/communication faceplate accepts two (2) 45X45mm French power outlet module or four (4) half size modules. | Arctic White | F |
| T70BH1AW | Snap-on horizontal communication faceplate. Accepts one 1/2-size Panduit Mini-Com™ insert and two modules. No additional mounting hardware required. | Arctic White | F |
| T70BH2AW | Snap-on horizontal communication faceplate. Accepts two 1/2-size Panduit Mini-Com™ insert and four modules. No additional mounting hardware required. | Arctic White | F |
| T70B1AW | Snap-on vertical communication faceplate. Accepts one 1/2-size Panduit Mini-Com™ insert and two modules. No additional mounting hardware required. | Arctic White | F |
| T70B2AW | Snap-on vertical communication faceplate. Accepts two 1/2-size Panduit Mini-Com™ insert and four modules. No additional mounting hardware required. | Arctic White | F |

For use with Thorsman Perimeter Trunking

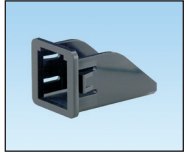
| | | | |
|----------|--|--------------|---|
| CFPTS4AW | Sloped faceplate holds up to four Mini-Com™ Modules. For use with Thorsman^ plastic trunking. | Arctic White | A |
| CFTSL4AW | Sloped faceplate holds up to four Mini-Com™ Modules. For use with Thorsman^ plastic or metal trunking. | Arctic White | B |

**Visit www.panduit.com or contact customer service for availability of other colours.

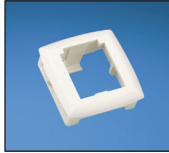
^Thorsman is a division of Schneider Electric.

^^See page 14 for compatible labels.

One-Position Adapters



CMNZA****-X**



CMAA1****-X**



CAFPA****-X**



CADIN1**

| Part Number | Description | Colour** | Label Type^^ |
|-------------|---|-----------|--------------|
| CMNZABL-X | Adapter snaps into 21mm x 21mm opening and accepts one Mini-Com™ Module. For snug fit, panel thickness should be 1.17mm to 1.42mm. | Black | — |
| CMAA1WH-X | Adapter snaps into 25mm x 25mm opening and accepts one Mini-Com™ Module. For snug fit, panel thickness should be 1.5mm to 2.0mm***. | White | — |
| CAFPAIW-X | Faceplate adapter mounts into a Clipsal^ or HPM^ faceplate opening and accepts single-space Mini-Com™ Modules. Not compatible with shuttered modules. | Off White | — |
| CADIN1IW | Mini-Com™ DIN Rail Mount Adapter mounts to standard 35mm DIN rail and accepts any single port Mini-Com™ Module. Includes a label and label cover. | Off White | D |

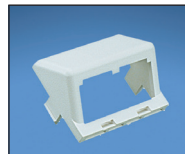
**Visit www.panduit.com or contact customer service for availability of other colours.

^Clipsal is a registered trademark of Clipsal Australia Pty Ltd.; HPM is a registered trademark of HPM Pty Ltd. of Australia.

***Can be used with Electraplan faceplate, MP09M2.

^^See page 14 for compatible labels.

Inserts



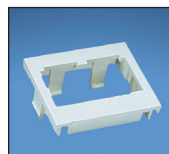
CHS2****-X**



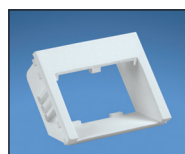
CHS2S****-X**



CHLS2S****-X**



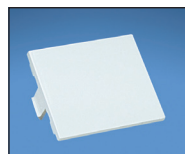
CHF2****-X**



CHSRE2****-X**



CHS1S****-X**



CHB2****-X**

| Part Number | Description | Colour** | Label Type^ |
|-------------|---|-----------|-------------|
| CHS2IW-X | Two module space, 1/2-size, sloped insert accepts two Mini-Com™ Modules. | Off White | F |
| CHS2SIW-X | Two module space, 1/2-size, sloped shuttered insert accepts two Mini-Com™ Modules. Not suitable for use with any audio/video or fibre connector module that protrudes beyond the face of the insert. | Off White | F |
| CHLS2SIW-X | Two module space, 1/2-size, sloped shuttered insert accepts two Mini-Com™ Modules. Not suitable for use with any audio/video or fibre connector module that protrudes beyond the face of the insert. Supplied with label and label cover. | Off White | D |
| CHF2IW-X | Two module space, 1/2-size flat insert accepts two Mini-Com™ Modules. | Off White | F |
| CHSRE2IW-X | Two module space, 1/2-size, 30° sloped recessed insert accepts two Mini-Com™ Modules. | Off White | F |
| CHS1SIW-X | One module space, 1/2-size, sloped shuttered insert accepts one Mini-Com™ Module. Not suitable for use with any audio/video or fibre connector module that protrudes beyond the face of the insert. | Off White | F |
| CHB2IW-X | 1/2 blank insert. Reserves space for future upgrades. | Off White | — |

**Visit www.panduit.com or contact customer service for availability of other colours.

^See page 14 for compatible labels.

Modular Furniture Faceplates



CFFP4**



CFFPL4**



CFFPLA4**



CFFPA2**



CFFPE3BL



UICFFP4**



MFFPE**



CFFPHM4**



CFFPEBSL4**



CFFPKE3BL

| Part Number | Description | Colour** | Label Type^^ |
|--------------------|--|----------|--------------|
| CFFP4BL | Faceplate snaps into industry standard knockouts found on modular furniture. Accepts up to four Mini-Com™ Modules. | Black | F |
| CFFPL4BL | Faceplate snaps into industry standard knockouts found on modular furniture. Accepts up to four Mini-Com™ Modules. Supplied with write-on label and label cover. | Black | B |
| CFFPLA4BL | Angled faceplate snaps into industry standard knockouts found on modular furniture. Accepts up to four Mini-Com™ Modules. Supplied with write-on label and label cover. | Black | B |
| CFFPA2BL | Angled faceplate snaps into industry standard knockouts found on modular furniture. Accepts up to two Mini-Com™ Modules. | Black | F |
| CFFPE3BL | Faceplate snaps into knockouts found on Knoll Morrison^ furniture, as well as industry standard knockouts. Accepts up to three Mini-Com™ Modules. | Black | G |
| UICFFP4BL | Ultimate ID™ Faceplate snaps into standard knockouts found on modular furniture. Holds up to four Mini-Com™ Modules. | Black | H |
| MFFPEBL | Faceplate extender for use when depth inside modular furniture base is limited. Extends plate approximately 12.7mm. Accepts CFFPL4 and CFFP4 modular faceplates. | Black | — |
| CFFPHM4BL | Faceplate snaps into knockouts found on Herman Miller^ furniture such as Action Office Series 2 and 3 and Ethospace Baseline. Accepts up to four Mini-Com™ Modules. | Black | F |
| CFFPEBSL4BL | Sloped faceplate snaps into knockouts found on Herman Miller^ furniture such as Ethospace Beltline. Accepts up to four Mini-Com™ Modules. Supplied with write-on label and label cover and icon slots. | Black | B |
| CFFPKE3BL | Faceplate snaps into knockouts found on Knoll Equity^ furniture. Accepts up to three Mini-Com™ Modules. | Black | G |

**Visit www.panduit.com or contact customer service for availability of other colours.

^HERMAN MILLER is a trademark of Herman Miller, Inc., Zeeland, MI. KNOLL, MORRISON and EQUITY are trademarks of Knoll, Inc.

^^See page 14 for compatible labels.

Surface Mount Boxes



CBXS1**-A



CBXS2**-A



CBXS3**-AY



CBXS4**-AY



CBXS6**-AY



CBXSD6**-AY



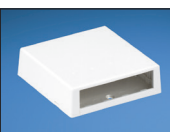
CBX1**-A



CBXJ2**-A



CBX2**-AY



CBXC4**-A



CBX4**-AY



CBXD6**-AY



CBX12**-AY



CBXF6**-AY



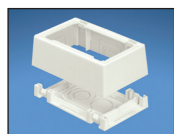
CBXF12**-AY

| Part Number | Description | Colour** | Label Type^ |
|----------------------|---|--------------|-------------|
| Shuttered | | | |
| CBXS1AW-A | Shuttered surface mount box accepts one Mini-Com™ Module. Dimensions: 15.75mmH x 41.66mmW x 62.73mmL. | Arctic White | G |
| CBXS2AW-A | Shuttered surface mount box accepts two Mini-Com™ Modules. Dimensions: 23.88mmH x 60.96mmW x 63.50mmL. | Arctic White | G |
| CBXS3AW-AY | Shuttered surface mount box accepts three Mini-Com™ Modules. Dimensions: 23.9mmH x 92.0mmW x 84.0mmL. | Arctic White | A |
| CBXS4AW-AY | Shuttered surface mount box accepts four Mini-Com™ Modules. Dimensions: 23.9mmH x 118.1mmW x 83.3mmL. | Arctic White | A |
| CBXS6AW-AY | Shuttered surface mount box accepts six Mini-Com™ Modules. Dimensions: 23.9mmH x 170.2mmW x 83.3mmL. | Arctic White | A |
| CBXSD6AW-AY | Deep shuttered surface mount box accepts six Mini-Com™ Modules (includes cable routing bridge). Dimensions: 29.6mmH x 192.5mmW x 98.0mmL. | Arctic White | A |
| Non-Shuttered | | | |
| CBX1AW-A | Mini-Com™ 1-port low profile surface mount box accepts a single Mini-Com™ Module. Dimensions: 22.8mmH x 26.3mmW x 48.1mmL. | Arctic White | G |
| CBXJ2AW-A | Mini-Com™ 2-port surface mount box accepts up to two Mini-Com™ Modules. Includes built-in removable blank to add a second module. Dimensions: 23.1mmH x 45.0mmW x 62.0mmL. | Arctic White | F |
| CBX2AW-AY | Mini-Com™ surface mount box accepts up to two Mini-Com™ Modules. Includes built-in removable blank to add a second module. Dimensions: 27.0mmH x 49.5mmW x 92.7mmL. | Arctic White | F |
| CBXC4AW-A | Mini-Com™ surface mount box accepts four Mini-Com™ Modules. Dimensions: 23.1mmH x 80.0mmW x 80.0mmL. | Arctic White | F |
| CBX4AW-AY | Mini-Com™ surface mount box accepts four Mini-Com™ Modules. Provides slots that accept cable ties for strain relief. Supplied with label holder/screw cover. Dimensions: 27.0mmH x 73.6mmW x 114.3mmL. | Arctic White | A |
| CBXD6AW-AY | Mini-Com™ surface mount box accepts six Mini-Com™ Modules. Provides slots that accept cable ties for strain relief. Provides bend radius control. Supplied with label holder/screw cover. Dimensions: 26.4mmH x 125.7mmW x 96.3mmL. | Arctic White | A |
| CBX12AW-AY | Mini-Com™ surface mount box holds up to twelve Mini-Com™ Modules, six on each side. Supplied with mounting screws, adhesive backing and label holder/screw cover. Dimensions: 26.3mmH x 145.0mmW x 138.5mmL. | Arctic White | A |
| Multimedia | | | |
| CBXF6AW-AY | Mini-Com™ surface mount box accepts up to six Mini-Com™ Modules. Includes built-in fibre spool that stores up to 24 metres of buffered fibre optic cable. Icon slots available for optional icons. Dimensions: 25.0mmH x 119.4mmW x 169.2mmL. | Arctic White | A |
| CBXF12AW-AY | Mini-Com™ surface mount box accepts up to 12 Mini-Com™ Modules. Includes built-in fibre spool that stores up to 24 metres of buffered fibre optic cable. Dimensions: 45.8mmH x 119.4mmW x 169.2mmL. | Arctic White | A |

**Visit www.panduit.com or contact customer service for availability of other colours.

^See page 14 for compatible labels.

Surface Mount Boxes (continued)



JB1FS**-A



DJBX**

| Part Number | Description | Colour** | Label Type^ |
|---|--|--------------|-------------|
| Pan-Way™ Fast-Snap™ Surface Mount Outlet Box | | | |
| JB1FSAW-A | Single gang two-piece snap together outlet box with adhesive backing. Box accepts Pan-Way™ Snap-On Faceplates. For use with Pan-Way™ T-45 or LD profile raceway. Dimensions: 41.1mmH x 82.7mmW x 127.1mmL. Conduit breakouts: 25mm, 19mm, 12mm | Arctic White | -- |
| Pan-Way™ Surface Mount Outlet Box | | | |
| DJBXAW | Single gang DIN box - base and cover. Conduit breakouts: 25mm, 19mm, 13mm. | Arctic White | -- |

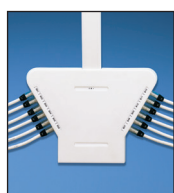
**Visit www.panduit.com or contact customer service for availability of other colours.

^See page 14 for compatible labels.

Boxes, MuTOA



CM6P**



UICBXA12**-A



UICBXH6**-A



UICBXHC6**-A



UICBXHEC**

| Part Number | Description | Colour** | Label Type^ |
|--------------|--|----------------|-------------|
| CM6PEI | MuTOA 6-port outlet box accepts up to six Mini-Com™ Modules when using 1/2-size sloped inserts (order separately). Cable entry opening: 17.7mm to 21.0mm diameter. Dimensions: 59.9mmH x 46.0mmW x 200.7mmL. | Electric Ivory | F |
| UICBXA12EI-A | Multi-media Ultimate ID™ surface mount box accepts up to twelve Mini-Com™ Modules and includes built-in figure eight spool to help manage fibre cable. Dimensions: 26.3mmH x 252.9mmW x 185.2mmL. | Electric Ivory | H |
| UICBXH6EI-A | Ultimate ID™ Hybrid Box with cover accepts up to six Mini-Com™ Modules in a single gang Mini-Com™ Faceplate (order separately) and up to six Mini-Com™ Fibre Optic Modules in the base. Dimensions: 25.0mmH x 107.6mmW x 200.4mmL. | Electric Ivory | H |
| UICBXHC6EI-A | Ultimate ID™ Hybrid Box with cover and cover extension accepts up to six Mini-Com™ Modules in a single gang Mini-Com™ Faceplate (order separately) and up to six Mini-Com™ Fibre Optic Modules in the base. Dimensions: 25.0mmH x 107.6mmW x 242.9mmL. | Electric Ivory | H |
| UICBXHECEI | Ultimate ID™ Hybrid Box Extension Cover provides additional security for fibre connections. Dimensions: 25.0mmH x 106.9mmW x 46.5mmL. | Electric Ivory | — |

**Visit www.panduit.com or contact customer service for availability of other colours.

^See page 14 for compatible labels.

Labelling and Identification

A full line of labelling products, software and printers is available to assist with standards-compliant labelling within your enterprise. Identification solutions comply with ANSI/TIA-606-B and ISO/IEC 14763-2 standards. These standards specify the format of identifiers that are required for data center and telecommunications room components, all the way to the desktop. Maintaining standards-compliant labelling allows moves, adds, changes, trouble-shooting and repairs to be accomplished faster and more efficiently, to lower the total cost of ownership.

Label Chart

| Label Type | Individual labels with covers | Laser/Ink Jet Desktop Printer label | TDP43ME Thermal Transfer Desktop Printer label | PanTher™ LS8E Hand-Held Printer label |
|------------|-------------------------------|---|--|---------------------------------------|
| A | CSGLLC-L | C195X040Y1J | C195X040Y1T | C195X040Y1C |
| B | C4PPLK | C261X035Y1J | C261X035Y1T | C261X035Y1C |
| C | RL505BK-X | C150X030Y1J | C150X030Y1T | C150X030Y1C |
| D | — | — | — | UILS8BW |
| E | — | — | C195X040Y1T | — |
| F | — | C125X030FJJ* | C125X0300YPT, T031X000FJT‡ | C125X030FJC*, T031X000FJC-BK |
| G | — | C061X030FJJ* | T031X000FJT‡ | C061X030FJC*, T031X000FJC-BK |
| H | — | UILJ1, UILJ2, UILJ3, UILJ4, UILJ6, UILJCOMBO^ | — | UILS8BW^ |
| I | — | C252X030FJJ | C252X030YPT | C252X030FJC |

‡Adhesive or non-adhesive use (for non-adhesive labelling solution, do not remove liner from label).

*Adhesive use only.

^Includes Ultimate ID Software.

Printers



TDP43ME/E



TDP43ME/E-KIT



LS8EQ-KIT-ACE



LS8EQ



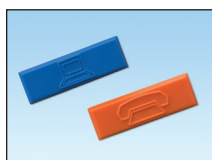
LS8E-KIT-ACE



LS8E

| Label Type | Part Description |
|----------------------|---|
| TDP43ME/E | 300 dpi printer; includes printer, Panduit™ Easy-Mark™ Labeling Software, RMEH4BL hybrid black ribbon, USB cable, user manual, quick start card, driver disk, and the following power cords: EuroPlug, Swiss, UK, and Japan JIS 8303 3-pin; for use outside North America. |
| TDP43ME/E-KIT | TDP43ME/E printer kit. Includes: printer, Panduit™ Easy-Mark™ Labeling Software, RMEH4BL hybrid black ribbon, AC power adapter with EuroPlug cord, USB cable, user manual, quick start card, TDP43ME-RS Roll Stand, TDP43ME-CASE, one roll of S100X150VATY labels, and driver disk. |
| LS8EQ-KIT-ACE | Includes LS8EQ printer with QWERTY keypad, one cassette of S100X150VAC self-laminating labels, six AA alkaline batteries, LS8-CASE, LS8-PCKIT, LS8-IB, LS8-WS, quick reference card, and operator's manual. Includes AC power adapter for Europe. |
| LS8EQ | Includes LS8EQ printer with QWERTY keypad, one cassette of S100X150VAC self-laminating labels, six AA alkaline batteries, and quick reference card. |
| LS8E-KIT-ACE | Includes LS8E printer, one cassette of S100X150VAC self-laminating labels, six AA alkaline batteries, LS8-CASE, LS8-PCKIT, LS8-IB, LS8-WS, quick reference card, and operator's manual. Includes AC power adapter for Europe. |
| LS8E | Includes LS8E printer, one cassette of S100X150VAC self-laminating labels, six AA alkaline batteries, and quick reference card. |
| LS8E-ACE | 100-240V AC power adapter for Europe for use with LS8E and LS8EQ printers. |

Icons



| Label Type | Part Description | Colour** |
|------------------|--|--------------|
| CIDAW-C | Plastic snap-in icon with data image. | Arctic White |
| CIPAW-C | Plastic snap-in icon with phone image. | Arctic White |
| UICIDIW-C | Plastic snap-in icon with data image, for use with Ultimate ID™ products. | Off White |
| UICIPIW-C | Plastic snap-in icon with phone image, for use with Ultimate ID™ products. | Off White |

**Visit www.panduit.com or contact customer service for availability of other colours.

Real-World Solutions to Ensure the Success of Our Customers

*With a proven reputation for excellence and innovation, Panduit and our partners work with you to overcome challenges and implement real-world solutions that create a competitive business advantage. Panduit offers the broadest range of solutions, from data centres and intelligent buildings to manufacturing operations, to help you build a **smarter, unified business foundation**.*



Technology Leadership

Panduit develops innovative physical infrastructure solutions that meet the rapidly changing needs of our clients, from hardware and software to advisory services. This commitment is supported by investment in advanced research, solutions-focused product development, world-class manufacturing and collaboration with customers at the forefront of technology.



Partner Ecosystem

Our best-in-class partner ecosystem offers a comprehensive portfolio of services that span the project lifecycle, from planning and design to delivery, deployment, maintenance and operation. Panduit business partners – distributors and certified architects, consultants, engineers, designers, system integrators and contractors – are qualified to help you achieve your objectives and realise predictable and measurable results.



Strategic Alliances

Panduit cultivates long-term strategic alliances with industry leaders, including Cisco Systems, EMC, IBM and Rockwell Automation, to develop, optimise, and validate solutions for our customers. This investment in people and resources helps solve our customers' greatest business challenges.



Global Business Commitment

Panduit is committed to delivering a consistently high level of quality and service the world over. With a presence in more than 100 countries, local Panduit sales representatives and technical specialists offer guidance and support that bring value to your business. Our global supply chain, which includes manufacturing, customer service, logistics, and distribution partners, provides prompt response to your inquiries and streamlines delivery to any worldwide destination.



Sustainability

With a commitment to environmental sustainability, Panduit develops and implements solutions that protect, replenish and restore the world in which we live. This commitment is demonstrated by Panduit's LEED Gold certified World Headquarters, leveraging the Unified Physical InfrastructureSM approach to enable convergence of critical building systems to drive energy efficiency and ongoing operational improvement.

Panduit Corp.
World Headquarters
Tinley Park, IL 60487

cs-emea@panduit.com
US and Canada: 800.777.3300
Europe, Middle East, and Africa:
44.208.601.7200
Latin America: 52.33.3777.6000
Asia Pacific: 65.6305.7575

www.panduit.com

PANDUITTM