

Fir Tree Push Mounts and Assemblies

PANDUIT push mounts with umbrellas and push mount assemblies are a reliable and cost effective solution for securing wire harnesses in the automotive, marine, white goods, heavy equipment and mass transit-rail markets. Designed for 0.18 inches to 0.40 inches through holes and variable panel thicknesses, the push mounts insert easily and exceed manufacturers' requirements for primary anchors of wire harnesses. The *PANDUIT* push mounts with umbrellas are compatible with all standard PAN-TY® Cable Ties up to the standard 50 pound loop tensile ties. The PUM-925-M30 mount has expanded slot capability which allows the use of the 120 pound loop tensile Light-Heavy cable ties. Heavy Duty Fir Tree Mounts (PUME925) allow the use of Wide Strap Cable Ties.



Key Features	Benefits
Unique alternating barb design	Provides increased retention and lower insertion force, reducing operator fatigue and improving productivity
Umbrella fir tree design	Locks securely into position and can be rotated 360 degrees, giving you a wider application range than fixed barb designs; also seals against dust and moisture
Exclusive contoured anvil head	Firmly retains a minimum wire gauge of 12 AWG (2mm Ø) within ± 10mm (.394") of the initial installation point, providing a low profile design
Assemblies with PLT cable ties	Provide routing and anchoring for wire harnesses, significantly reducing harness assembly time
Robust Material	Heavy Duty Fir Tree Mounts (PUME925) utilize impact modified heat stabilized weather resistant Nylon 6.6 material

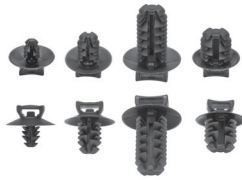


PUM Fir Tree Mount
with PLT2S Standard Cable Tie



PUME Heavy Duty Fir Tree Mount
with PLWS Wide Strap Cable Tie

Fir Tree Push Mounts and Assemblies



(L-R) PUM-049-M30, PUM-071-M30,
PUM-925-M30, PUM-100-M30

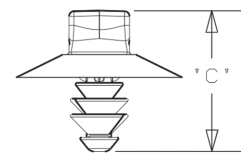
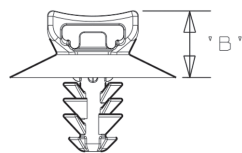
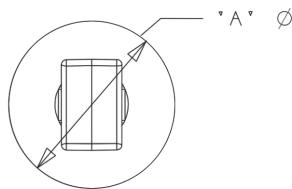


PUME925-D350

Fir Tree Push Mounts

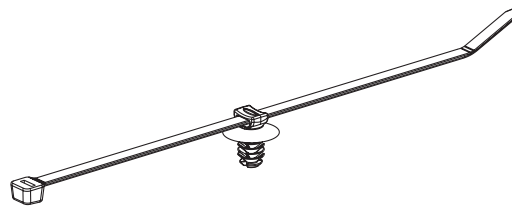
Part Number	Used with Cable Ties‡	Head Diameter (A)		Panel to Top of Mount (B)		Overall Height (C)		Panel Hole Diameter Range		Panel Thickness Range		Std. Pkg. Qty.	Std. Ctn. Qty.
		In.	mm	In.	mm	In.	mm	In.	mm	In.	mm		
PUM-049-M30	M, I, S	0.67	17.0	0.26	6.6	0.54	13.8	0.18 – 0.19	4.6 – 4.9	0.03 – 0.19	0.7 – 3.0	1000	5000
PUM-071-M30	M, I, S	0.67	17.0	0.26	6.5	0.67	16.9	0.25 – 0.28	6.3 – 7.1	0.03 – 0.28	0.8 – 7.0	1000	5000
PUM-100-M30	M, I, S	0.64	16.0	0.26	6.5	0.67	16.9	0.35 – 0.40	9.0 – 10.0	0.03 – 0.28	0.8 – 7.0	1000	5000
PUM-925-M30	M, I, S, LH	0.77	20.0	0.30	7.6	1.05	26.7	0.34 – 0.36	8.8 – 9.3	0.04 – 0.62	1.0 – 16.0	1000	5000
PUME925-D350	M, I, S, LH, H, EH	1.18	30.0	0.275	7.0	1.10	28.0	0.34 – 0.36	8.8 – 9.3	0.04 – 0.62	1.0 – 16.0	500	5000

‡Cable Tie Cross Section: M = Miniature, I = Intermediate, S = Standard, LH = Light-Heavy, H = Heavy, and EH = Extra Heavy



Fir Tree Push Mount Assemblies

Part Number	Head Diameter (A)		Panel to Top of Mount (B)		Overall Height (C)		Panel Hole Diameter Range		Panel Thickness Range		Max. Bundle Diameter		Std. Pkg. Qty.	Std. Ctn. Qty.
	In.	mm	In.	mm	In.	mm	In.	mm	In.	mm	In.	mm		
PUM-049-2S-D30	0.67	17.0	0.26	6.6	0.54	13.8	0.18 – 0.19	4.6 – 4.9	0.03 – 0.19	0.7 – 3.0	1.88	48.0	500	5000
PUM-071-2S-D30	0.67	17.0	0.26	6.6	0.67	16.9	0.25 – 0.28	6.3 – 7.1	0.03 – 0.28	0.8 – 7.0			500	5000
PUM-100-2S-D30	0.64	16.0	0.26	6.6	0.67	16.9	0.35 – 0.40	9.0 – 10.0	0.03 – 0.28	0.8 – 7.0			500	5000
PUM-925-3H-T30	0.77	20.0	0.30	7.6	1.05	26.7	0.34 – 0.36	8.8 – 9.3	0.04 – 0.62	1.0 – 16.0	3.00	76.0	200	1000
PUM-071-B2S-D30	0.67	17.0	0.26	6.6	0.67	16.9	0.25 – 0.28	6.3 – 7.1	0.03 – 0.28	0.8 – 7.0	2.00	51.0	500	5000
PUME925-3E-C350	1.18	30.0	0.275	7.0	1.10	28.0	0.34 – 0.36	8.8 – 9.3	0.04 – 0.62	1.0 – 16.0	3.25	82.6	100	1000
PUME925-4E-C350	1.18	30.0	0.275	7.0	1.10	28.0	0.34 – 0.36	8.8 – 9.3	0.04 – 0.62	1.0 – 16.0	4.13	105	100	1000



WORLDWIDE SUBSIDIARIES AND SALES OFFICES

PANDUIT US/CANADA
Phone: 800.777.3300

PANDUIT EUROPE LTD.
London, UK
cs-emea@panduit.com
Phone: 44.20.8601.7200

PANDUIT SINGAPORE PTE. LTD.
Republic of Singapore
cs-ap@panduit.com
Phone: 65.6305.7575

PANDUIT JAPAN
Tokyo, Japan
cs-japan@panduit.com
Phone: 81.3.6863.6000

PANDUIT LATIN AMERICA
Guadalajara, Mexico
cs-la@panduit.com
Phone: 52.33.3777.6000

PANDUIT AUSTRALIA PTY. LTD.
Victoria, Australia
cs-aus@panduit.com
Phone: 61.3.9794.9020

For a copy of Panduit product warranties, log on to www.panduit.com/warranty

For more information

Visit us at www.panduit.com

Contact Customer Service by email: cs@panduit.com
or by phone: 800.777.3300

PANDUIT[®]

©2017 Panduit Corp.
ALL RIGHTS RESERVED.
WACB33--SA-ENG
5/2017