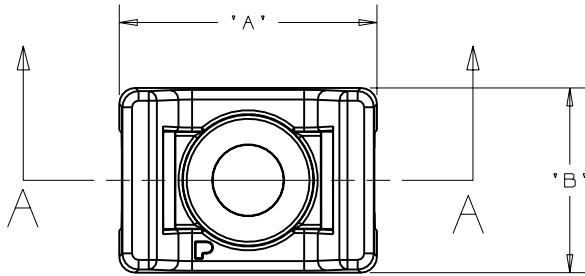


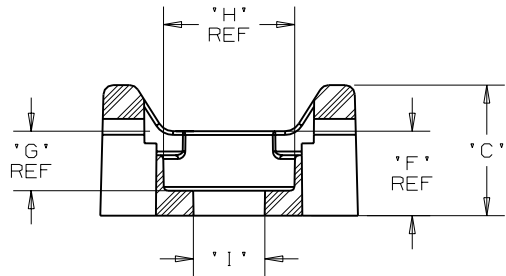
THIS COPY IS PROVIDED ON A RESTRICTED BASIS AND IS NOT TO BE USED IN ANY WAY DETRIMENTAL TO THE INTERESTS OF PANDUIT CORP.

PANDUIT PART NO.	RECOMMENDED FASTENER	'A'	'B'	'C'	'D'	'E'	'F'	'G'	'H'	'I'	WEIGHT		PRODUCT COMPATIBLE WITH CABLE TIE CROSS-SECTION(S)	
											lbs/100 pcs	g/100 pcs		
SGTM2S8- TMSG2S8- _	#8 (M4) SCREW	0.66 (16.7)	0.48 (12.2)	0.34 (8.6)	0.25 (6.3)	0.09 (2.3)	0.22 (5.6)	0.15 (3.8)	0.333 (8.7)	0.18 (4.6)		0.180 (81.6)		S, I, M SG100M, SG150I, SG200S, SG250S, SG300S, SG370S

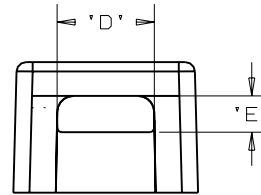


NOTES:

- SEE CURRENT PRICE SHEET FOR PART NUMBER SUFFIX DESIGNATION FOR PACKAGE SIZE.



SECTION A - A



DIMENSIONS IN BRACKETS ARE METRIC [mm]

CAD FILENAME/LAYERS

G02789BE_PB_SGTM2S8_02

PANDUIT

CORP. TINLEY PARK, ILLINOIS

TIE MOUNT - (SUPER GRIP TIES)
SGTM2S8- & TMSG2S8-
_

UNLESS OTHERWISE SPECIFIED,
DIMENSIONAL TOLERANCES ARE:
(.X) ±0.05 (1.3) (.XXX) ±0.010 (0.25)
(.XX) ±0.02 (0.5) ANGLES ± 5°

UNLESS OTHERWISE SPECIFIED,
ALL DIMENSIONS ARE GIVEN
IN INCHES, THIRD ANGLE
PROJECTION.

DRAWN BY TMSA

MAT'L:

SCALE NONE

DATE 03-22-05

NYLON 6/6

DRAWING NO.

GB2987BE

DWG
SIZE
A

REV	DATE	BY	CHK	DESCRIPTION	ECN	R	CUST	SUP
2	3/9/06	JAD		UPDATE CABLE TIE CALLOUTS IN TABLE	GB2987BE	2		
1	8-24-05	TMSA		ADDED PART NUMBER SGTM2S8- _	GB2987BE	1		
R	03-22-05	TMSA		INITIAL RELEASE	GB2987BE	R		

REV	DATE	BY	CHK	DESCRIPTION	ECN	R	CUST	SUP
2	3/9/06	JAD		UPDATE CABLE TIE CALLOUTS IN TABLE	GB2987BE	2		
1	8-24-05	TMSA		ADDED PART NUMBER SGTM2S8- _	GB2987BE	1		
R	03-22-05	TMSA		INITIAL RELEASE	GB2987BE	R		