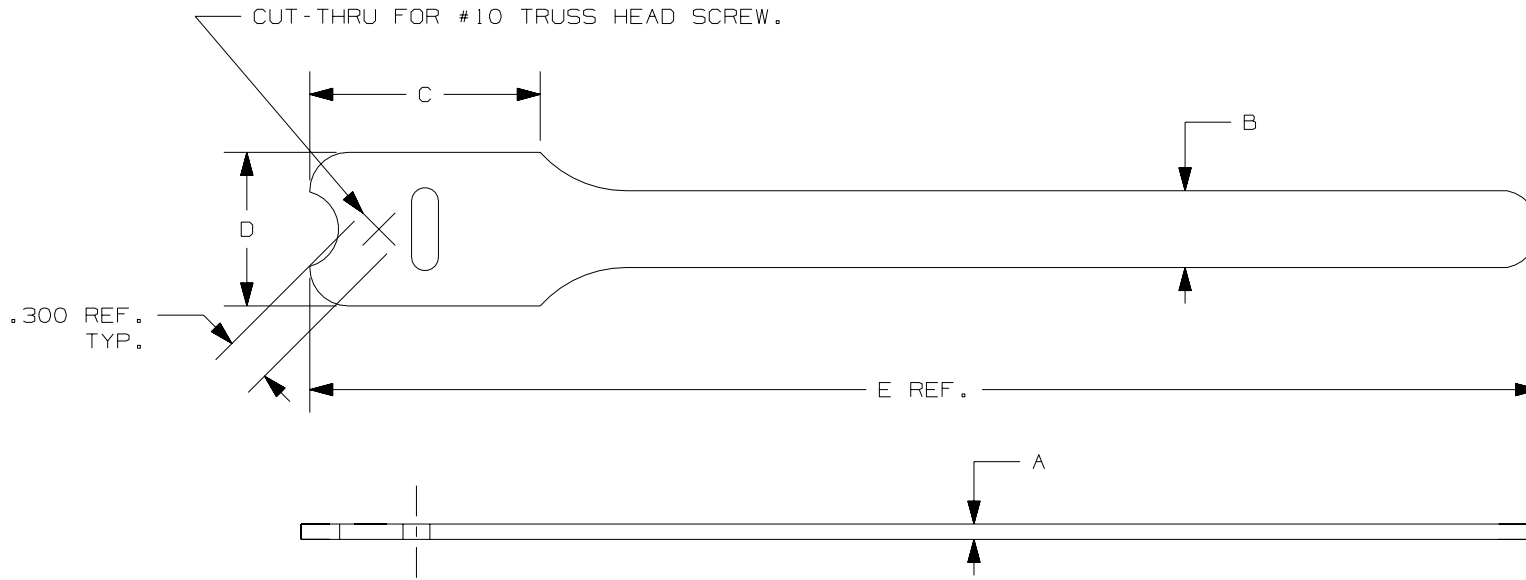


THIS COPY IS PROVIDED ON A RESTRICTED BASIS AND IS NOT TO BE USED IN ANY WAY DETRIMENTAL TO THE INTERESTS OF PANDUIT CORP.



PANDUIT PART NO.	BUNDLE DIA.		A in (mm)	B in (mm)	C in (mm)	D in (mm)	E in (mm)	MIN. LOOP * TENSILE lbs. (N)	CROSS SECTION	APPROXIMATE WEIGHT lbs/100 PIECES (g)
	MIN. in (mm)	MAX. in (mm)								
HLT21	.25 (6.4)	1.91 (48.5)	.100 (2.5)	.50 (12.7)	1.50 (38.1)	1.00 (25.4)	8.0 (203)	40 (178)	INTERMEDIATE	.48 (218)
HLT31	.25 (6.4)	3.18 (80.6)	.100 (2.5)	.50 (12.7)	1.50 (38.1)	1.00 (25.4)	12.0 (305)	40 (178)	INTERMEDIATE	.65 (295)

NOTES:

- 1) SEE CURRENT PRICE SHEET FOR PART NUMBER SUFFIX DESIGNATION FOR PACKAGE SIZE AND PART COLOR.
- \* 2) MINIMUM 2" OVERLAP REQUIRED TO ACHIEVE LOOP TENSILE RATING.

								CAD FILENAME/LAYERS		DIMENSIONS IN PARENTHESIS ARE IN METRIC UNITS	
										SS_26938_06.PRT	
								PANDUIT		CORP. TINLEY PARK, ILLINOIS	
										TAK-TY™ HOOK & LOOP CABLE TIES	
								UNLESS OTHERWISE SPECIFIED, DIMENSIONAL TOLERANCES ARE: (.X) ± (.XXX) ± .030 (.XX) ± .125 ANGLES ±		UNLESS OTHERWISE SPECIFIED, ALL DIMENSIONS ARE GIVEN IN INCHES, THIRD ANGLE PROJECTION.	
6	1/13/06	ERW		ADDED APPROX. WEIGHT PER 100 PIECES	26938	6		DRAWN BY KET	MAT'L: POLYETHYLENE HOOK/ NYLON KNIT LOOP	SCALE NONE	
5	5/3/05	ERW	JVL	REMOVED OVAL SLOT DIMENSION TO BE CONSISTENT WITH OTHER CUSTOMER DRAWINGS	26938	5	JVL	DATE 11/28/94		DRAWING NO. SS-26938	DWG A SIZE
REV	DATE	BY	CHK	DESCRIPTION	ECN	R	CUST	SUP	CHK'D HVP		