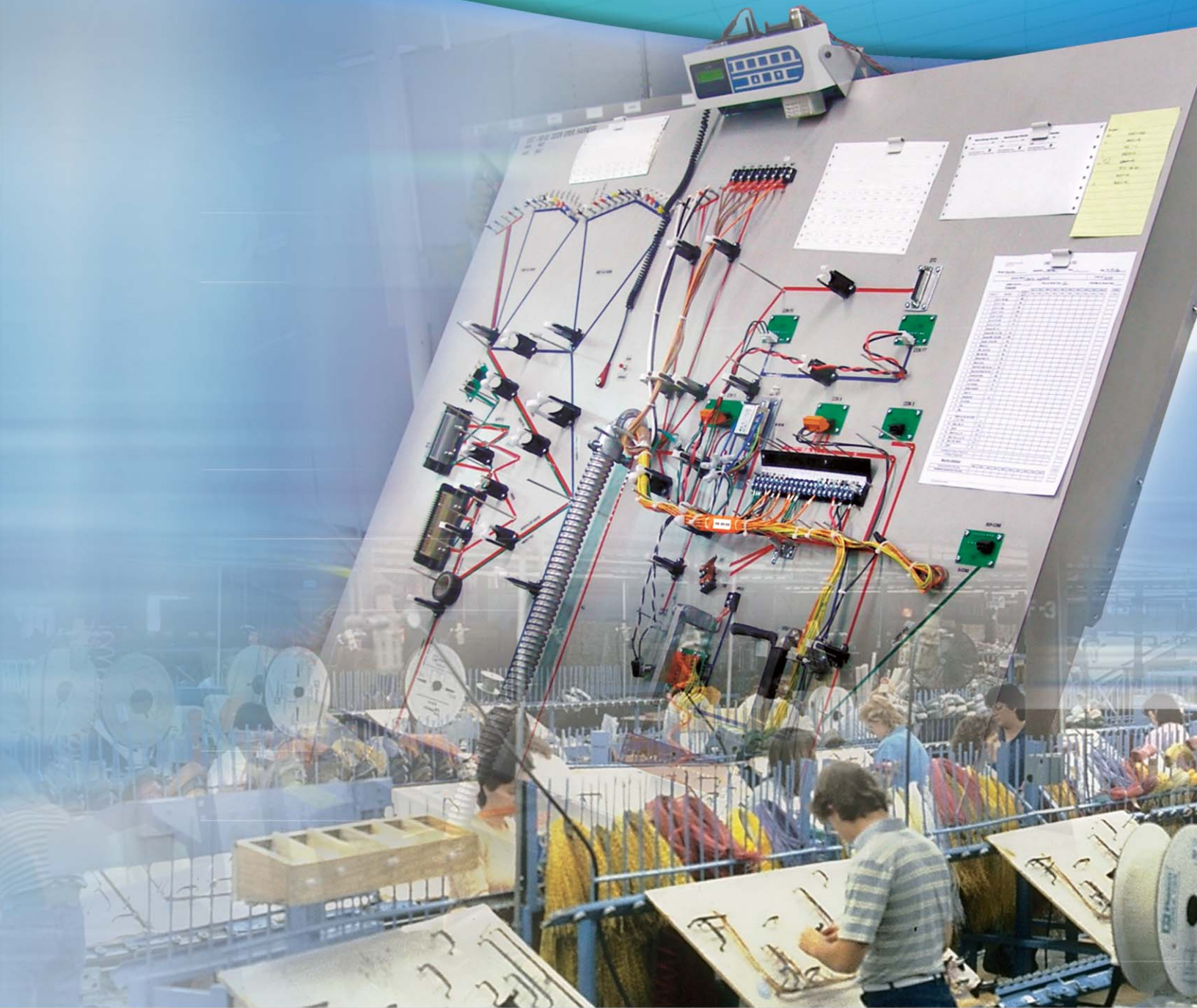


Innovative Wire Management Systems

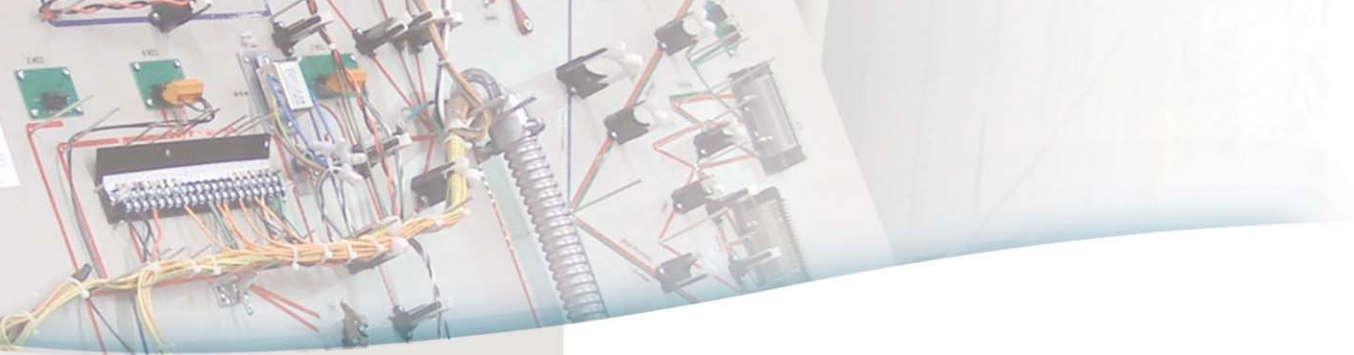
For Harness Fabrication,
Installation and Automation



PANDUIT[®]

building a smarter,
unified business foundation

Connect. Manage. Automate.

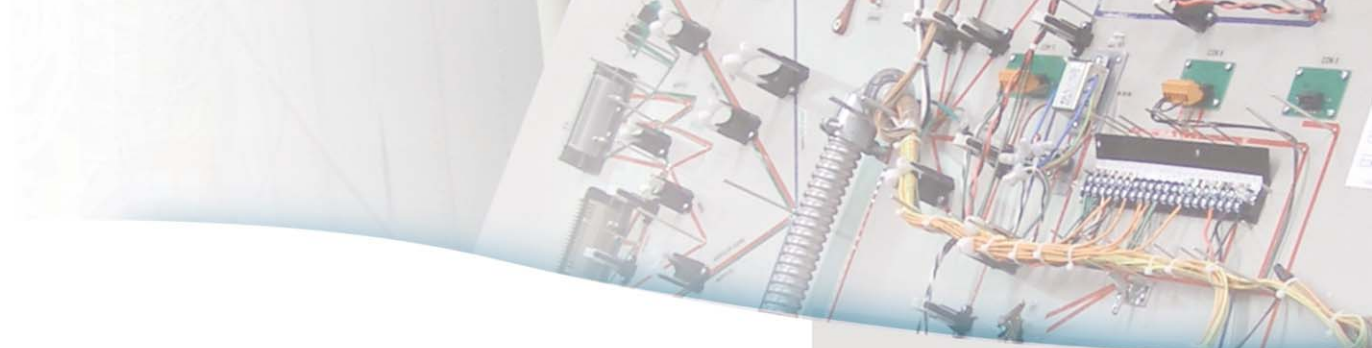


Wire Harness Solutions That Address Today's Challenges

Intense global competition and increasing operational expenses are pressuring Contract Manufacturers and Original Equipment Manufacturers to speed production and control costs without compromising quality, system availability, and reliability.

Wire harness solutions from Panduit offer the broadest range of options for the most demanding requirements and applications. Through innovative product systems and services, we help you increase your productivity, reduce your installation costs, and improve reliability.





Increase Productivity, Lower Installed Cost

Panduit product solutions are designed to work together as a system to provide the lowest installed costs. Quality products are engineered for ease of installation and are supported with reliable, high speed automatic and manual tooling systems that increase consistency and productivity, reduce operator fatigue, decrease injuries associated with repetitive operations, and minimize potential rework.

World-Class Quality and Reliability

Panduit has a history of developing innovative products that deliver high quality and lowest installed cost. Beyond product advantages, Panduit customers also benefit from a network of outstanding distributors and world-class customer service. Only Panduit delivers the proven choice for wire harness assemblers.

- Comprehensive range of product sizes, styles, and materials
- Innovative features lower installed cost and improve functionality
- Reliable, easy-to-use tooling aid productivity
- Superior technical support and customer service
- Full standards compliance

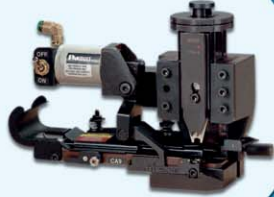


Wire Harness Roadmap

1 Cable Ties
Pages 6 – 9



2 Terminals
Pages 10 – 12



3 Compression Connectors
Page 13



4 Wire Harness Fixtures
Page 14



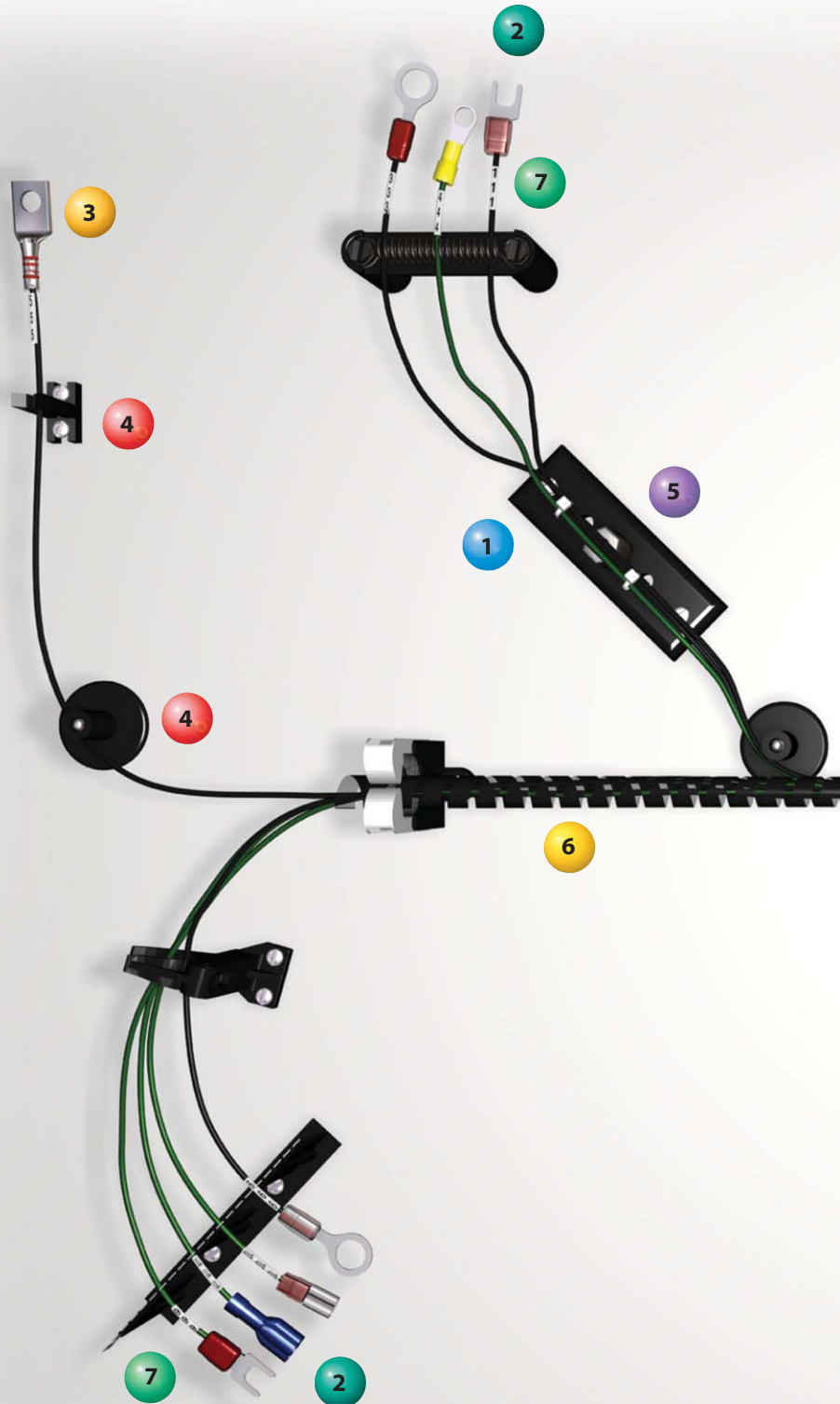
5 Cable Tie Mounts
Page 14

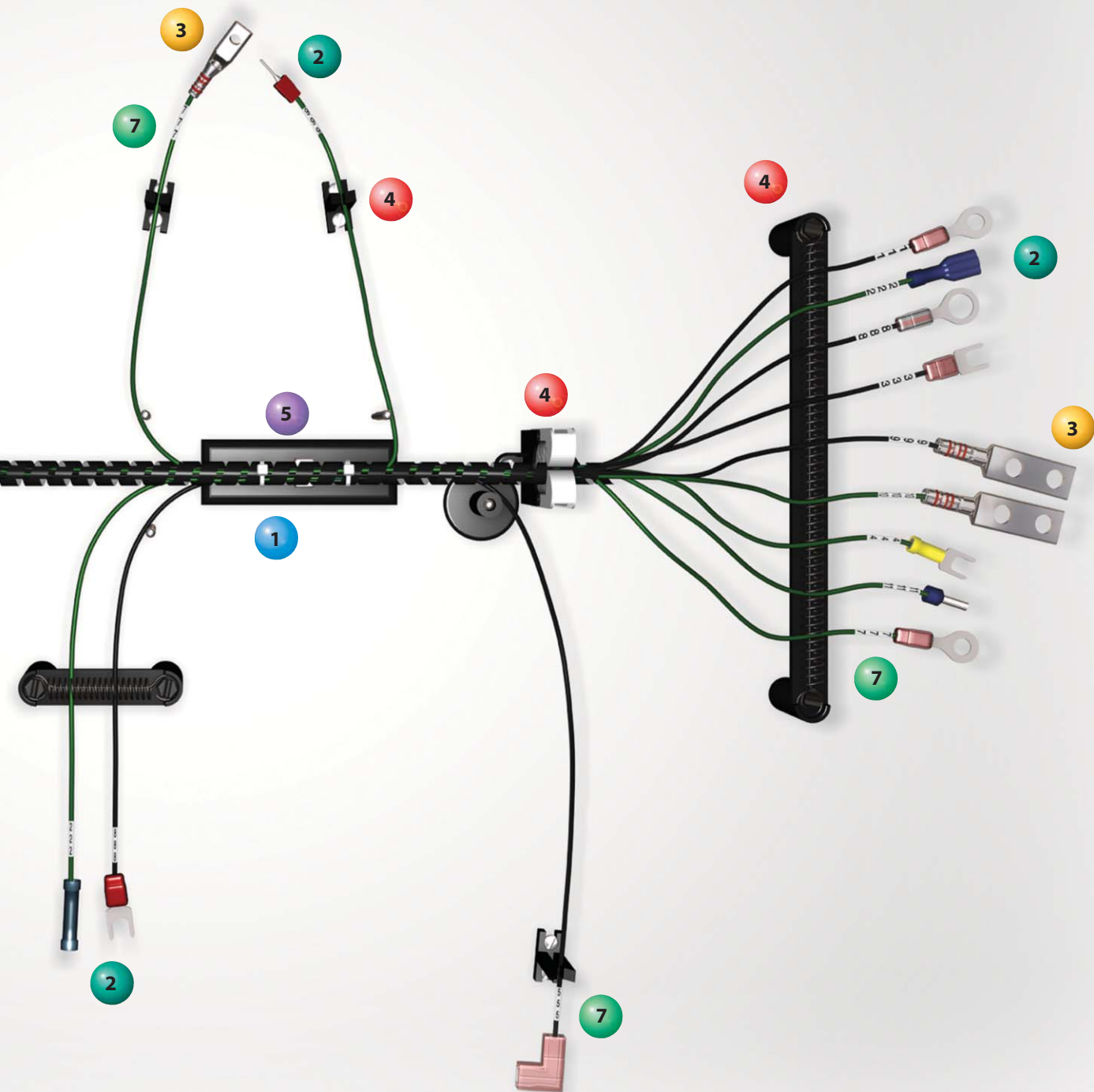


6 Abrasion Protection
Page 15



7 Identification
Page 15







Automatic Cable Tie Installation Systems

The complete line of Panduit automatic cable tie installation systems offers a superior solution for high volume harnessing, assembly, fastening and packaging applications at the lowest installed cost. These ergonomic systems increase productivity, provide consistent performance and reduce activities that lead to repetitive motion injuries. A variety of tool and reel-fed cable tie combinations along with optional software for advanced system monitoring and performance provides users with flexible solutions for their unique application needs.

- Wrap, tension and cut-off cable ties in less than one second — six times faster than conventional manual cable tie installation
- Four systems install a wide variety of cable tie sizes and styles for application versatility
- Multi-language microprocessor based controller monitors system performance; provides production data and reporting, including error detection and cycle count for increased reliability

Tool Heads

- Ergonomic, lightweight design reduces operator fatigue and repetitive motion injuries, no counter balance required
- Right or left hand operation, hand-held and bench mount options for flexibility
- Tension adjustment feature allows user to easily set and maintain desired tension for consistent performance



PAT1M



PAT1.5M



PAT2S



PAT3S

Part Number	Max. Bundle Dia.	Cross Section	Works With		Optional Components
			Dispenser	Transfer Hose	
PAT1M	0.82" (21mm)	Miniature	PDM stationary dispenser, no frame required	PHM, available in 3.2 ft. (1m), 6.5 ft. (2m), 10 ft. (3m)	PATMBM bench mount, PL283N1 filter regulator, PDH10-37 air supply hose – 10 ft. (3m), PDM-DI data interface system
PAT1.5M	1.31" (33mm)	Miniature			
PAT2S	1.94" (49mm)	Standard	PDS stationary dispenser, PDSF frame	PHS, available in 6.5 ft. (2m) and 10 ft. (3m)	PAT2SBM bench mount, PL283N1 filter regulator, PDH10-37 air supply hose – 10 ft. (3m), PDS-DI data interface system
PAT3S	2.75" (70mm)	Standard	PDS stationary dispenser, PD3SF frame		



Data Interface Software and Ethernet Enabled Dispenser

Panduit exclusive Ethernet enabled dispenser and customized data interface software allow production personnel to monitor real time data in a shop floor environment. The Ethernet enabled dispenser provides a physical connection between the cable tie installation system and an Industrial Ethernet Network via an RJ45 connection and internal Ethernet Card.

- Allows Production and/or Engineering personnel the capability to measure and track production performance such as job tracking, cycle counts, tool and dispenser serial numbers, and routine maintenance
- Provides the ability to send email notifications for specific system messages
- Maintains an exportable electronic log of messages and maintenance



Robotic Integration Tooling Options

- PAT1M and PAT1.5M tool heads available with metal housings allow convenient/precise mounting to robotic arms
- Utilizes the PAT system electronic interface option, PDM-EI, to optimally integrate the PAT system to a robot for a completely automated cable tie installation process
- Significantly reduces labor costs while improving installation quality, reliability, and consistency



Part Number	Used with Tool Head	Max. Bundle Dia.	Used with Cable Ties
PAT1M-BT-RBT	PAT1M	0.82" (21mm)	BT1M-XMR Cable Ties
PAT1M-RBT			PLT1M-XMR Cable Ties
PAT1.5M-BT-RBT	PAT1.5M	1.31" (33mm)	BT1.5M-XMR Cable Ties
PAT1.5M-RBT			PLT1.5M-XMR Cable Ties

Reel-Fed Cable Ties

- Reels of up to 5,000 continuously molded cable ties reduce downtime due to fewer reel changes
- Available in a full range of styles, sizes, materials, and colors to suit a variety of applications
- XMR ties with loop tensile strength up to 30 lbs. (133 N); VMR ties with loop tensile strength at 50 lbs. (222 N)

Miniature Cross Section

Part Number	Tie Style	Material	Color	Max. Bundle Dia.	Min. Loop Tensile Str.
-------------	-----------	----------	-------	------------------	------------------------

Reel-Fed Cable Ties for PAT1M System (Barbed Style)

BT1M-XMR	Barbed	Nylon 6.6	Natural	0.82" (21mm)	30 lbs. (133 N)
BT1M-XMR0	Barbed	Weather Resistant Nylon 6.6	Black	0.82" (21mm)	30 lbs. (133 N)
BT1M-XMR30	Barbed	Heat Stabilized Nylon 6.6	Black	0.82" (21mm)	30 lbs. (133 N)

Reel-Fed Cable Ties for PAT1.5M System (Barbed Style)

BT1.5M-XMR	Barbed	Nylon 6.6	Natural	1.31" (33mm)	30 lbs. (133 N)
BT1.5M-XMR0	Barbed	Weather Resistant Nylon 6.6	Black	1.31" (33mm)	30 lbs. (133 N)
BT1.5M-XMR30	Barbed	Heat Stabilized Nylon 6.6	Black	1.31" (33mm)	30 lbs. (133 N)

Reel-Fed Cable Ties for PAT1M System (All-Nylon Style)

PLT1M-XMR	All-Nylon	Nylon 6.6	Natural	0.82" (21mm)	18 lbs. (80 N)
PLT1M-XMR0	All-Nylon	Weather Resistant Nylon 6.6	Black	0.82" (21mm)	18 lbs. (80 N)
PLT1M-XMR00*	All-Nylon	Weather Resistant Nylon 6.6	Black	0.82" (21mm)	18 lbs. (80 N)
PLT1M-XMR1	All-Nylon	Nylon 6.6	Brown	0.82" (21mm)	18 lbs. (80 N)
PLT1M-XMR2	All-Nylon	Nylon 6.6	Red	0.82" (21mm)	18 lbs. (80 N)
PLT1M-XMR3	All-Nylon	Nylon 6.6	Orange	0.82" (21mm)	18 lbs. (80 N)
PLT1M-XMR4Y	All-Nylon	Nylon 6.6	Yellow	0.82" (21mm)	18 lbs. (80 N)
PLT1M-XMR5	All-Nylon	Nylon 6.6	Green	0.82" (21mm)	18 lbs. (80 N)
PLT1M-XMR6	All-Nylon	Nylon 6.6	Blue	0.82" (21mm)	18 lbs. (80 N)
PLT1M-XMR7	All-Nylon	Nylon 6.6	Purple	0.82" (21mm)	18 lbs. (80 N)
PLT1M-XMR8	All-Nylon	Nylon 6.6	Gray	0.82" (21mm)	18 lbs. (80 N)
PLT1M-XMR10	All-Nylon	Nylon 6.6	White	0.82" (21mm)	18 lbs. (80 N)
PLT1M-XMR30	All-Nylon	Heat Stabilized Nylon 6.6	Black	0.82" (21mm)	18 lbs. (80 N)

Reel-Fed Cable Ties for PAT1.5M System (All-Nylon Style)

PLT1.5M-XMR	All-Nylon	Nylon 6.6	Natural	1.31" (33mm)	18 lbs. (80 N)
PLT1.5M-XMR0	All-Nylon	Weather Resistant Nylon 6.6	Black	1.31" (33mm)	18 lbs. (80 N)
PLT1.5M-XMR00*	All-Nylon	Weather Resistant Nylon 6.6	Black	1.31" (33mm)	18 lbs. (80 N)
PLT1.5M-XMR30	All-Nylon	Heat Stabilized Nylon 6.6	Black	1.31" (33mm)	18 lbs. (80 N)

Standard Cross Section

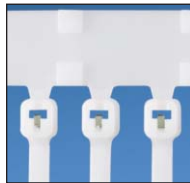
Reel-Fed Cable Ties for PAT2S System (All-Nylon Style)

PLT2S-VMR	All-Nylon	Nylon 6.6	Natural	1.94" (49mm)	50 lbs. (222 N)
PLT2S-VMR0	All-Nylon	Weather Resistant Nylon 6.6	Black	1.94" (49mm)	50 lbs. (222 N)
PLT2S-VMR30	All-Nylon	Heat Stabilized Nylon 6.6	Black	1.94" (49mm)	50 lbs. (222 N)

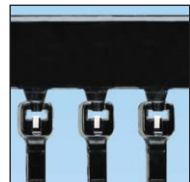
Reel-Fed Cable Ties for PAT3S System (All-Nylon Style)

PLT3S-VMR	All-Nylon	Nylon 6.6	Natural	2.75" (70mm)	50 lbs. (222 N)
PLT3S-VMR30	All-Nylon	Heat Stabilized Nylon 6.6	Black	2.75" (70mm)	50 lbs. (222 N)

*Maximum bundle diameter will be less for solid round bundles.



BT_XMR



BT_XMR (0, 30)



PLT1M



PLT2S
PLT3S

Cable Tie Hand Tools

Panduit provides high-quality cable tie installation tools to meet a variety of low volume harnessing with highest reliability and lowest installed cost. Ergonomic, pneumatic and manual tools are durable, lightweight, and easy to use. Styles are available with tool controlled tension and cut-off and installer controlled tension and cut-off to suit particular application needs.

- Tension and cut-off mechanism maintains desired tension and provides flush cable tie cut-off, preventing damage to adjacent wire bundles and protecting workers' hands and arms
- Beveled tie entry allows quick side entry of tie into tool which speeds installation
- Controlled tip ejection allows operator to quickly and safely remove excess cut-off material, eliminating the need to clean-up work area after completion of installation



Pneumatic Hand Tool with Adjustable, Controlled Tension and Cut-Off



PTS



PTH



Easy Tension Adjustment

Part Number	Used with Cable Ties	Weight	Air Supply	Optional Accessories
PTS	Subminiature through Standard	17.3 oz. (490 g)	Operates on 70-90 psig (4.8-6.1 bar), non-lubricated air	PL289N1 filter/regulator, PPH10 10' hose assembly, PHCAQ / PHAT adapter fittings for hose, KPTSTL tension locking kit, KGTSBLD blade replacement kit - PTS, KPHTBLD blade replacement kit - PTH
PTH	Standard through Heavy	32.0 oz. (907 g)	Operates on 70-100 psig (4.8-6.8 bar), non-lubricated air	

Manual Hand Tool with Tool Controlled Tension and Cut-Off



Part Number	Used with Cable Ties	Weight
GTS	Subminiature through Standard	9.8 oz. (278 g)
GTSL	Subminiature through Standard	8.8 oz. (249 g)
GTH	Standard through Heavy	12.0 oz. (340 g)
GS2B	Miniature through Standard	11.5 oz. (327 g)
GS4H	Standard through Heavy	12.0 oz. (340 g)
GS4EH	Light-Heavy through Extra-Heavy	16.0 oz. (454 g)

Manual Hand Tool with Installer Controlled Tension and Cut-Off



Part Number	Used with Cable Ties	Weight
STS2	Miniature through Standard	2.5 oz. (71g)
STH2	Standard through Heavy	2.5 oz. (71g)
STHV	Light-Heavy through Heavy	12.0 oz. (341g)
ST3EH	Light-Heavy through Extra-Heavy	9.0 oz. (256g)



Automated Termination System

Panduit automated termination system provides the best solution for quality, medium to high volume terminations designed to dramatically reduce set-up time and production downtime by providing a familiar, electrically powered solution. Process variation and rework steps are reduced by consistently indexing and crimping connectors. Panduit offers a wide selection of automated tools and continuously molded disconnects, splices, and terminals on reels to meet demanding application challenges.

- Less than one second cycle time is six times faster than manual installation
- Applicator automatically adjusts feed stroke to the correct pitch and length for the entire product line of over 400 continuously molded terminals, reducing cost of ownership
- Continuously molded integrated carrier guarantees alignment of terminal front to back and side to side to eliminate skewing of product, resulting in consistent, high quality terminations

Press and Applicators

- Universally designed micro-applicator allows use in either bench press, or commercially available automatic wire processing (AWP) machines
- Less than one minute to complete for process set-up or changeover
- Terminal and ferrules loading is fast and easy without special instructions or set-up personnel

Electric Press



CP-871



CP-881

Part Number	Power Supply	Crimp Stroke	Crimping Force	Features
CP-871	110 VAC/60 Hz, 220 VAC/50 Hz (field convertible)	1.6" (40mm)	1.6" (40mm)	Split cycle, cycle counter, pneumatic feed, micro-applicator mounting base
CP-881	110/120 VAC/60 Hz	—	—	Quick 10 sec. set-up and charge-over, cycle counter, automatic micro-processor (strips, places, and crimps ferrules), portable

Universal Applicators



CA9



CA-800EZ



CA10

Part Number	Product Feed	Mounting Base	Termination Range	Interchangeable Die Sets
CA9	Compressed air	Quick release micro-applicator	#22 AWG – #10 AWG (0.5mm ² – 6.0mm ²) reel-fed insulated terminals, disconnects and splices	CD9 Series, 26 die sets
CA-800EZ	Mechanical linkage	Micro-applicator compatible	#22 AWG – #10 AWG (0.5mm ² – 6.0mm ²) reel-fed insulated terminals, disconnects and splices	CD-800 Series, 20 die sets
CA10	Compressed air	Quick release micro-applicator	#20 AWG – #14 AWG (0.5mm ² – 2.5mm ²) reel-fed ferrules	CD10 Series, 3 die sets



Continuously Molded Reel-Fed Terminals

- Continuously molded carrier strip design on reel-fed terminals guarantees precise wire entry location for every connector, thereby improving process capability
- Terminals on reels are linked by plastic sleeves, which reduces additional process steps to install insulation sleeves and improves safety by reducing production of sharp metal scrap
- Pre-insulated design saves labor

Reel-Fed Terminals

Over 175 standard parts – rings, forks, locking forks, flanged forks, and splices in wire sizes #22 AWG – #10 AWG



Rings



Flange Fork



Butt Splice

Part Number System for Reel-Fed Terminals

P	NF	14	6	R	N	3K
Type	Insulation	Wire Range	Stud Size	Tongue Configuration	Special Configuration	Std. Pkg. Size
P = Terminal BS = Butt Splice	N = Nylon Insulated NF = Nylon Insulated Funnel Entry V = Vinyl Insulated	18 = #22 – 18 14 = #16 – 14 12 = #16 – 12 10 = #12 – 10	4 = #4 5 = #5 6 = #6 8 = #8 10 = #10 14 = 1/4" 56 = 5/16" 38 = 3/8"	R = Ring HDR = Heavy Duty Ring F = Fork FF = Fanged Fork LF = Locking Fork	N = Narrow Tongue W = Wide Tongue B = Butted Seam = Standard (leave blank)	2K = 2,000 pcs. 3K = 3,000 pcs.

(Continued on next page)

Continuously Molded Reel-Fed Terminals

Reel-Fed Disconnects: Over 75 configurations of female and male disconnects on reels.



Part Number System for Reel-Fed Disconnects

<u>D</u>	<u>NF</u>	<u>14</u>	<u>250</u>	<u>FIB</u>	<u>3K</u>
Type	Insulation	Wire Range	Size and Type	Special Configuration	Std. Pkg. Size
D = Disconnects	NF = Nylon Funnel Entry NG = Nylon Funnel Entry Metal Insulation Grip NFR = Nylon Funnel Entry Right Angle PF = Premium Grade Nylon (Double Crimp) V = Vinyl	18 = #22 – 18 14 = #16 – 14 10 = #12 – 10	110 = 0.110 x 0.032 tab size 111 = 0.110 x 0.020 tab size 145 = 0.145 x 0.032 tab size 187 = 0.187 x 0.032 tab size 188 = 0.187 x 0.020 tab size 205 = 0.187/0.205 x 0.032 tab size 206 = 0.187/0.205 x 0.020 tab size 250 = 0.250 x 0.032 tab size 0.187/0.205: Expandable receptacle will accept male tabs from 0.187" to 0.205" widths in 0.032" or 0.020" thick styles.	B = Butted seam C = Compression Tab FB = Metal Insulation Grip, Female FIB = Fully Insulated, Butted Seam, Female FIBX = Fully Insulated, Butted Seam, Female, Expanded Wire Entry FIM = Fully Insulated Male FIMB = Fully Insulated, Male, Oversized Housing FIMX = Fully Insulated, Male, Expanded Wire Entry M = Male MB = Male Butted Seam	K = 1,000 KD = 1,500 2K = 2,000 3K = 3,000

Reel-Fed Ferrules:

Color-coded to DIN standards and available in strips, mini-reels, and reels for wiring strip applications from #20 - 14 AWG



<u>F</u>	<u>S</u>	<u>D</u>	<u>75</u>	<u>8</u>	<u>5K</u>	<u>10</u>
Type	Wire Type	Color Code	Signifies Wire Size (mm ²)	DIN length	Std. Pkg. Size	Color-Code Number
F = Ferrule	S = Single	D = DIN = Standard (leave blank)			DSL = 50 DK = 500 K = 1,000 3K = 3,000 5K = 5,000	0 = Black 2 = Red 6 = Blue 8 = Gray 10 = White



Terminals and Installation Tools

Panduit terminals, disconnects, splices and ferrules, and installation tools provide OEM and CM customers improved productivity and quality in medium-to-high volume, high product mix wire harness fabrication. Panduit terminal installation tools feature a patented tongue locator and controlled cycle feature to improve quality by reducing process variation from operator influence. Process cycle time is faster because the operator does not have to position the part nor determine the right amount of force to apply to the crimp. Over 1,000 terminal part configurations covering #26 to #2 AWG wire sizes are available to meet unique application needs.



- Patented tongue locator controls the connector's depth and rotational position in the die pocket resulting in twice as fast crimp cycles
- Ergonomic designs help reduce operator fatigue and repetitive motion injuries, minimizing downtime
- Pneumatic crimping tools feature cycle times of less than one second – six times faster than conventional manual termination

Contour Crimp™, Manual, Controlled Cycle Crimping Tools



CT-1550



CT-1570

Part Number	Termination Range
CT-1550	#22-#10 AWG (0.5mm ² -6.0mm ²) barrel insulated terminals, disconnects and splices
CT-1570	#22-#10 AWG (0.5mm ² -6.0mm ²) non-insulated terminals, disconnects and splices
CT-1525	#22-#10 AWG (0.5mm ² -6.0mm ²) fully insulated disconnects and #26-#22 barrel insulated terminals and splices
CT-1002	#26-#10 AWG (0.25mm ² -6.0mm ²) ferrules with and without sleeves

Battery Powered Crimping Tools



CT-2500



CT-2600



Interchangeable Crimp Head (optional)

Part Number	Termination Range	Tool Weight	Included with Tool	Required Additional Components
CT-2500	#22-#10 AWG (0.5mm ² -6.0mm ²) insulated and non-insulated terminals, disconnects and splices	3.3 lbs. (1.5 Kg)	Two, NiCd 9.6 V batteries, battery charger and molded carrying case	Interchangeable crimp heads: CT-2550CH*, CT-2525CH*, CT-2570, Die inserts: CD-525, CD-550, CD-570
CT-2600	#8-#2 AWG insulated and non-insulated ring terminals	3.5 lbs. (1.6 Kg)	Crimp head, two NiCd 9.6 V batteries, battery charger and molded carrying case	CD-2600 series crimping dies

*Patented tongue locator integrated into tool for faster crimp cycles.

Compression Connectors and Installation Tools



Panduit compression connectors and installation tools are engineered to provide fast and easy termination solutions for high volume harnessing and assembly applications at the lowest installed cost. The tools are ergonomically designed to minimize operator effort and feature controlled cycle mechanisms to ensure reliability and repeatability in every crimp made. Broad range of connector styles and configurations are available in copper and aluminum for use with conductor sizes #14 AWG – 1000 kcmil and in copper for rigid metric wire, sizes 4mm² – 630mm².

- Industry-leading lithium-ion battery powered tools significantly improve productivity with up to 135% more crimps per battery charge and up to a 30% faster crimp cycle time than tools with NiCd or NiMH batteries
- High-quality, durable construction and low pressure hydraulic requirements of the pneumatic tools provide long-term dependability
- Crimping dies and compression connectors are color-coded for easy matching

Remote Hydraulic, Low Pressure Crimp Head for Large Volume, Small and Large Conductors



CT-930LPCH



CT-8250HP



CT-900LPHPH



CD-920



CT-901RFS

Part Number	Copper Conductor Size Range	Tool Weight	Included with Tool	Required Additional Components	Optional Components
CT-930LPCH	#8 AWG – 250 kcmil Code	11 lbs. (5 Kg)	Steel tool case and male Parker type quick-connect fitting assembled to tool	CT-8250HP hydraulic pump, CT-900LPHPH hose, CD-920 series crimping dies	CT-901RFS foot switch

Battery Powered Crimping Tool for Medium Volume, Small and Large Conductors



Part Number	Copper Conductor Size Range	Tool Weight	Included with Tool	Required Additional Components
CT-3001	#8 AWG – 500 kcmil Code, #8 AWG – 350 kcmil Flex, 10mm ² -240mm ² Metric Class 2r, 10mm ² -95mm ² Metric Class 5f and 6f	7.15 lbs (3.3 Kg) with battery	Two Milwaukee® M18™ XC high capacity RED lithium-ion 18VDC rechargeable batteries, one Milwaukee® battery charger, heavy-duty bag	CD-2001 series crimping dies

Contour Crimp™, Manual, Controlled Cycle Crimping Tool

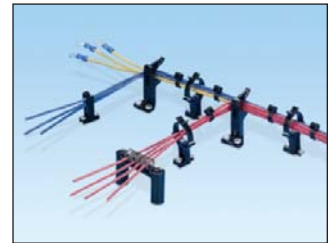


Part Number	Copper Conductor Size Range	Tool Weight	Included with Tool
CT-1700	#8 AWG – #1 AWG Code, #8-#2 AWG Flex	1.25 lbs. (0.6 Kg)	5-position color coded rotating die integrated into tool head

Comprehensive Systems To Meet Your Needs

Wire Harness Fixtures

Panduit's complete line of harness board accessories includes wire harness fixtures to help enable the assembly process. The fixtures hold the harness off from the board surface to ensure that critical information on the assembly drawing is not hidden, for fast and efficient installation of cable ties and other products onto the harness. Beginning your harness build with Panduit wire harness fixtures will improve quality and eliminate costly rework by maintaining adequate bundle sizing and ensuring consistency of wire breakout locations to help implement 'mistake-proofing' into the assembly process to prevent future problems.



Cable Tie Mounts

Wire harness manufacturers are being asked to add more and more value to the harnesses they produce. One way in which they can do this is by integrating devices which simplify and mistake-proof the finished harness installation. Panduit cable tie mounts seamlessly integrate into the harness manufacturing process, to enable value addition to the harness without complicating the manufacturing process. The broad range of mounting devices offers a reliable method to secure wire harnesses onto virtually any structure, whether the mounts are preassembled onto the wire harness or integrated into the end device.

Abrasion Protection

The full range of abrasion protection products includes spiral wrap, heat shrink, and grommet edging to insulate, protect, and color code your wires to help ensure high-quality performance in even the most demanding environments. Pan-Wrap™ Split Harness Wrap innovative engineering simplifies wire and cable breakouts with the patented slotted wall pattern design for improved flexibility, abrasion protection, and uniform bundle protection. The patented Pan-Wrap™ Tool opens 180° allowing for quick, easy loading and installation of maximum bundle diameters.



Identification Solutions

Panduit is a global leader for innovative solutions for identification of wires, cables, enclosures, and machinery. Identification systems are engineered to perform in the harshest industrial environments and applications, with a focus on wire/cable harness identification for OEMs and contract manufacturers. Panduit solutions provide enhanced productivity, reliability, and value through innovative labeling software, label materials, and printing systems. Innovative products for wire harness identification include self-laminating labels, heat shrink markers, marker plates, and terminal block markers with a complete range of industrial products and printers.

Real-World Solutions

*With a proven reputation for excellence and innovation, Panduit and our partners work with you to overcome challenges and implement real-world solutions that create a competitive business advantage. Panduit offers the broadest range of solutions, from data centers and intelligent buildings to manufacturing operations, to help you build a **smarter, unified business foundation.***



Technology Leadership

Panduit develops innovative physical infrastructure solutions that meet the rapidly changing needs of our clients, from hardware and software to advisory services. This commitment is supported by investment in advanced research, solutions-focused product development, world-class manufacturing, and collaboration with customers at the forefront of technology.



Partner Ecosystem

Our best-in-class partner ecosystem offers a comprehensive portfolio of services that span the project lifecycle, from planning and design to delivery, deployment, maintenance, and operation. Panduit business partners – distributors, and certified architects, consultants, engineers, designers, system integrators, and contractors – are qualified to help you achieve your objectives and realize predictable and measurable results.



Strategic Alliances

Panduit cultivates long-term strategic alliances with industry leaders, including Cisco Systems, EMC, IBM, and Rockwell Automation, to develop, optimize, and validate solutions for our customers. This investment in people and resources helps solve our customers' greatest business challenges.



Global Business Commitment

Panduit is committed to delivering a consistently high level of quality and service the world over. With a presence in more than 100 countries, local Panduit sales representatives and technical specialists offer guidance and support that bring value to your business. Our global supply chain, which includes manufacturing, customer service, logistics, and distribution partners, provides prompt response to your inquiries and streamlines delivery to any worldwide destination.



Sustainability

With a commitment to environmental sustainability, Panduit develops and implements solutions that protect, replenish, and restore the world in which we live. This commitment is demonstrated by Panduit's LEED Gold certified World Headquarters, leveraging the Unified Physical InfrastructureSM approach to enable convergence of critical building systems to drive energy efficiency and ongoing operational improvement.

Panduit Corp.
World Headquarters
Tinley Park, IL 60487

cs@panduit.com
US and Canada: 800.777.3300
Europe, Middle East, and Africa:
44.20.8601.7200
Latin America: 52.33.3777.6000
Asia Pacific: 65.6305.7575

www.panduit.com

PANDUIT®