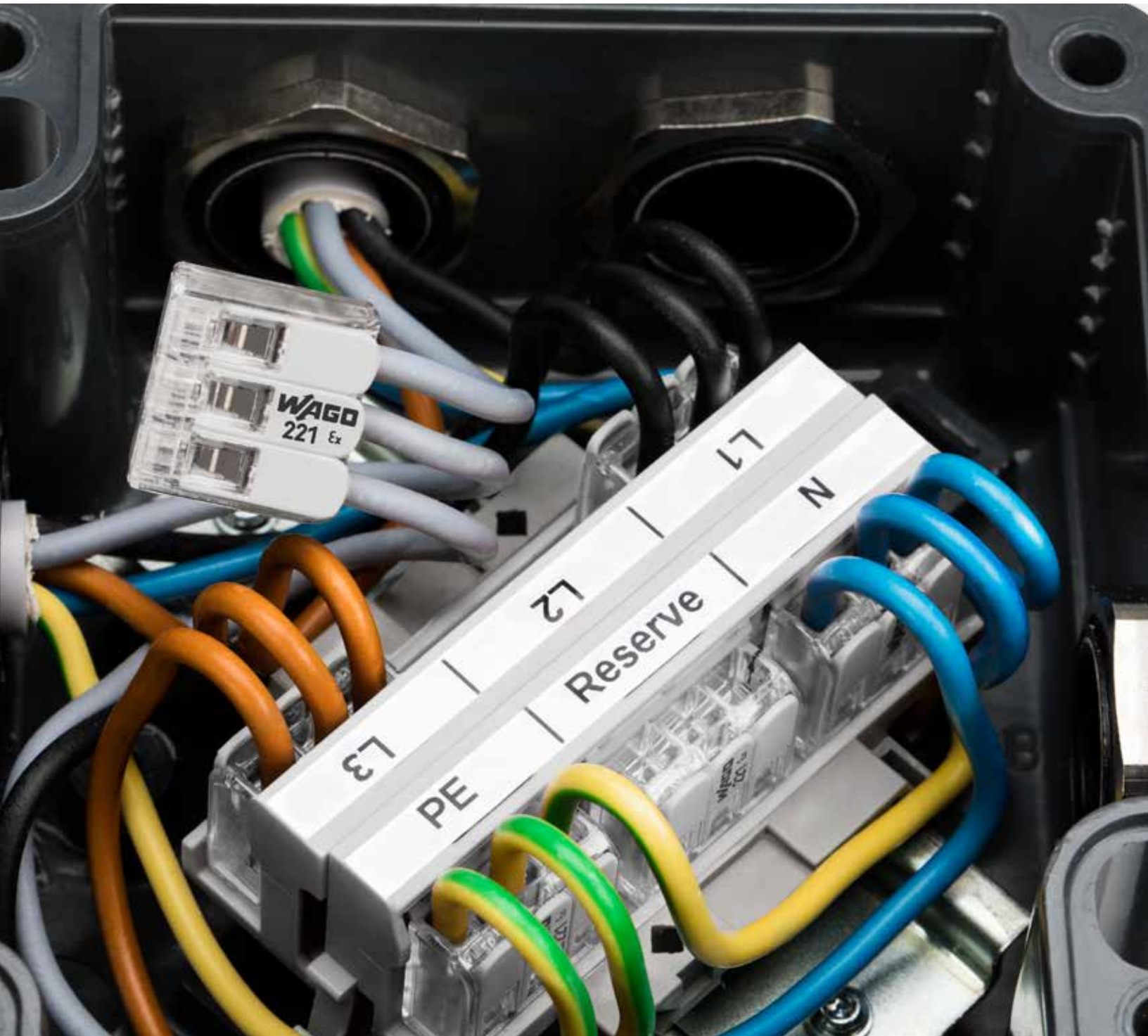




221 Series for Hazardous Locations The Way to Connect!



WAGO 221 SERIES FOR HAZARDOUS LOCATIONS

New Possibilities for Manufacturers of Junction Boxes, Luminaires and Electronic Devices for Ex Areas



- Easy, fast and reliable connection technology for your products in Ex areas
- Only permitted in conjunction with the mounting carrier
- Mounting carrier can be DIN-rail mounted or can be screwed down to a smooth surface
- Approvals:



- ATEX: Ex II 2 G Ex eb IIC Gb / Zone 1, 2
- IECEx: Ex eb IIC Gb / Class 1, Zone 1
- American Ex: AEx eb IIC / Class 1, Zone 1
- Operating Temperature: Max. +105 °C



Strip conductor to 11 mm.



Easily open the lever by hand and insert a conductor.



Push lever back down.



Easily install a connector into the mounting carrier.



Simply connect and re-wire inserted connectors in the carrier.



Easily test inserted connectors in the carrier.



Easily remove the connectors – without tools.



Secure the carrier using screws on smooth surfaces.



Rated 440 V with spacing between the adjacent connectors.



Rated 275 V with no spacing.

Ex Variant			
24 - 12 AWG	Fine Stranded Solid Stranded	440V/275V 600V* 20A	
Description	Item No.	Pack. Unit	
2-wire connectors	221-482	100	
3-wire connectors	221-483	50	
5-wire connectors	221-485	25	
Carrier			
Description	Item No.	Pack. Unit	
Mounting carrier; for 2-, 3- and 5-wire connectors; 24 - 12 AWG	221-501	50	

* cURus rated for general industry application