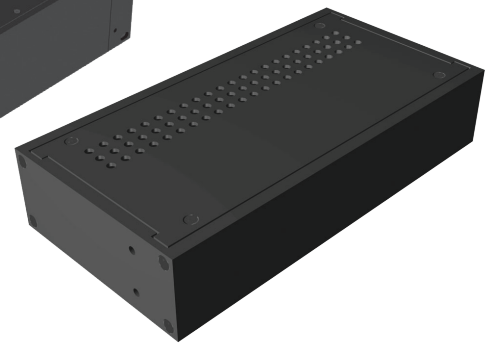
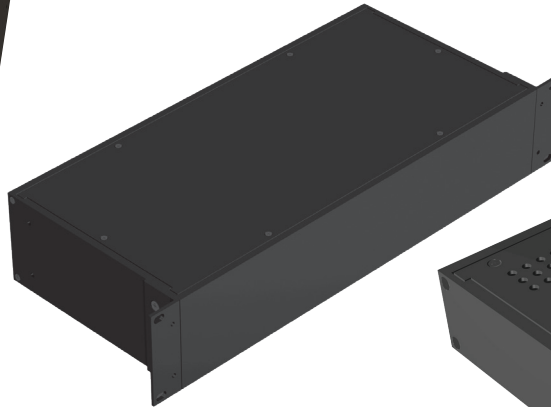


# RACK-MOUNTED INSTRUMENT ENCLOSURES

## **RM SERIES**

*Strong construction yet  
light weight, using all  
aluminum components*



## **FEATURES**

- Suitable for desk top or rack mountable applications.
- Available in 1U to 5U, in 8.3" or 16.6" widths and many depth options.
- Vented and solid options, and available with or without mounting flanges.
- Knockdown design ships un-assembled for easy handling and shipping protection.
- Strong construction using:
  - Extruded aluminum side, front & rear panels 0.125" (3.2mm) thick.
  - Flat aluminum top and bottom panels 0.064" (1.6 mm) thick.
- Can be used with or without rack mounting brackets (one pair included).
- Front & rear panel are interchangeable.
- Extruded aluminum is finished in rugged, textured black powder coat.
- Includes top, bottom, sides, self adhesive rubber feet, rack mount brackets and all assembly hardware.
- Pull handles & adjustable rear bracket rack mount kit (for deeper models) are available - sold separately.

*See reverse for parts listing >>*

**More information: [www.hammondmfg.com/rm](http://www.hammondmfg.com/rm)**

# PART DETAILS

Part No. Solid Top/ Bottom	Part No. Vented Top/ Bottom	Height	Width	Depth	Rack Units	Includes 19" Rack Mounting Flanges	Accepts Pull Handle Part No.	Adjustable Rear Bracket (Sold in Pairs)
RM1U0804SBK	RM1U0804VBK	1.75	8.30	4.25	1U	No	1427B2BK	-
RM1U0808SBK	RM1U0808VBK	1.75	8.30	8.00	1U	No	1427B2BK	-
RM1U1908SBK	RM1U1908VBK	1.75	16.60	8.00	1U	Yes	1427B2BK	-
RM1U1913SBK	RM1U1913VBK	1.75	16.60	13.00	1U	Yes	1427B2BK	-
RM1U1918SBK	RM1U1918VBK	1.75	16.60	18.00	1U	Yes	1427B2BK	RM1U18BRKT
RM1U1922SBK	RM1U1922VBK	1.75	16.60	22.00	1U	Yes	1427B2BK	RM1U18BRKT
RM1U1928SBK	RM1U1928VBK	1.75	16.60	28.00	1U	Yes	1427B2BK	RM1U18BRKT
RM2U0804SBK	RM2U0804VBK	3.50	8.30	4.25	2U	No	1427E1BK	-
RM2U0808SBK	RM2U0808VBK	3.50	8.30	8.00	2U	No	1427E1BK	-
RM2U1908SBK	RM2U1908VBK	3.50	16.60	8.00	2U	Yes	1427E1BK	-
RM2U1913SBK	RM2U1913VBK	3.50	16.60	13.00	2U	Yes	1427E1BK	-
RM2U1918SBK	RM2U1918VBK	3.50	16.60	18.00	2U	Yes	1427E1BK	RM2U18BRKT
RM2U1922SBK	RM2U1922VBK	3.50	16.60	22.00	2U	Yes	1427E1BK	RM2U18BRKT
RM2U1928SBK	RM2U1928VBK	3.50	16.60	28.00	2U	Yes	1427E1BK	RM2U18BRKT
RM3U0804SBK	RM3U0804VBK	5.25	8.30	4.25	3U	No	1427P1BK	-
RM3U0808SBK	RM3U0808VBK	5.25	8.30	8.00	3U	No	1427P1BK	-
RM3U1908SBK	RM3U1908VBK	5.25	16.60	8.00	3U	Yes	1427P1BK	-
RM3U1913SBK	RM3U1913VBK	5.25	16.60	13.00	3U	Yes	1427P1BK	-
RM3U1918SBK	RM3U1918VBK	5.25	16.60	18.00	3U	Yes	1427P1BK	RM3U18BRKT
RM3U1922SBK	RM3U1922VBK	5.25	16.60	22.00	3U	Yes	1427P1BK	RM3U18BRKT
RM3U1928SBK	RM3U1928VBK	5.25	16.60	28.00	3U	Yes	1427P1BK	RM3U18BRKT
RM4U1908SBK	RM4U1908VBK	7.00	16.60	8.00	4U	Yes	1427P1BK	-
RM4U1913SBK	RM4U1913VBK	7.00	16.60	13.00	4U	Yes	1427P1BK	-
RM4U1918SBK	RM4U1918VBK	7.00	16.60	18.00	4U	Yes	1427P1BK	RM4U18BRKT
RM4U1922SBK	RM4U1922VBK	7.00	16.60	22.00	4U	Yes	1427P1BK	RM4U18BRKT
RM4U1928SBK	RM4U1928VBK	7.00	16.60	28.00	4U	Yes	1427P1BK	RM4U18BRKT
RM5U1913SBK	RM5U1913VBK	8.75	16.60	13.00	5U	Yes	1427P1BK	-
RM5U1918SBK	RM5U1918VBK	8.75	16.60	18.00	5U	Yes	1427P1BK	RM5U18BRKT
RM5U1922SBK	RM5U1922VBK	8.75	16.60	22.00	5U	Yes	1427P1BK	RM5U18BRKT
RM5U1928SBK	RM5U1928VBK	8.75	16.60	28.00	5U	Yes	1427P1BK	RM5U18BRKT

*Replacement panels, hardware, rack mounting flanges, body & side panels, as well as adjustable rear brackets, are available for purchase - please visit our website for a full parts listing: [www.hammondmfg.com/rm](http://www.hammondmfg.com/rm)*

